

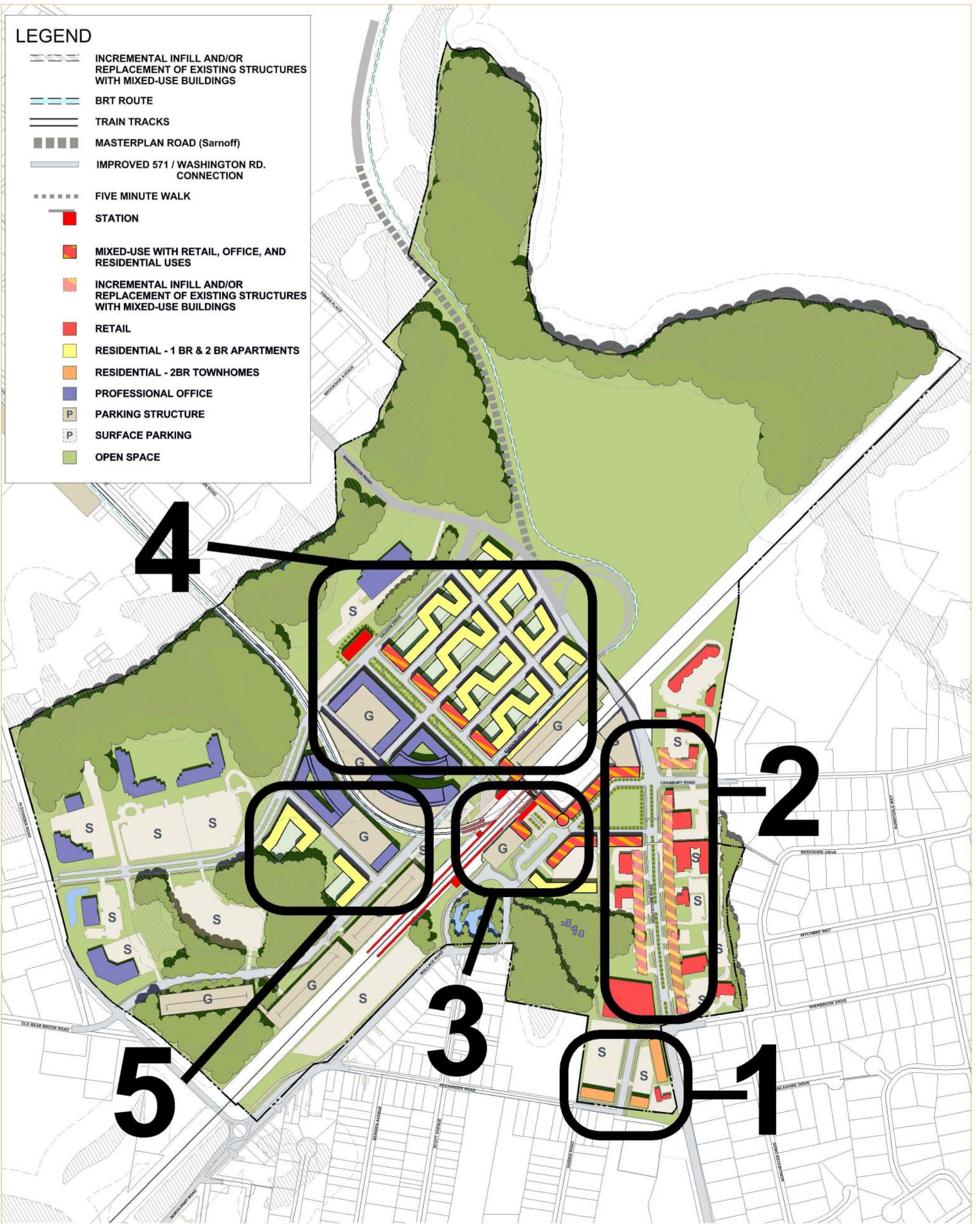


LEGEND

-  INCREMENTAL INFILL AND/OR REPLACEMENT OF EXISTING STRUCTURES WITH MIXED-USE BUILDINGS
-  BRT ROUTE
-  TRAIN TRACKS
-  MASTERPLAN ROAD (Sarnoff)
-  IMPROVED 571 / WASHINGTON RD. CONNECTION
-  FIVE MINUTE WALK
-  STATION
-  MIXED-USE WITH RETAIL, OFFICE, AND RESIDENTIAL USES
-  INCREMENTAL INFILL AND/OR REPLACEMENT OF EXISTING STRUCTURES WITH MIXED-USE BUILDINGS
-  RETAIL
-  RESIDENTIAL - 1 BR & 2 BR APARTMENTS
-  RESIDENTIAL - 2BR TOWNHOMES
-  PROFESSIONAL OFFICE
-  PARKING STRUCTURE
-  SURFACE PARKING
-  OPEN SPACE



LAND-USE PLAN: ZONES