

- GENERAL NOTES**
- DIMENSIONS SHOWN ARE TO FACE OF SHEATHING FOR EXTERIOR WALLS AND FACE OF STUD FOR INTERIOR PARTITIONS. U.N.O.
  - GRID LINES IDENTIFY FACE OF SHEATHING FOR EXTERIOR WALLS AND CENTERLINE OF STUD FOR INTERIOR WALLS. U.N.O.
  - REFER TO DRAWING A-801 FOR WALL TYPE DESCRIPTIONS AND DETAILS.
  - PROVIDE MASONRY CONTROL JOINTS (C.J.) IN MASONRY AS REQUIRED BY SPECIFICATION SECTION (XXXX).
  - ALL GYPSUM BOARD EDGES SHALL BE LOCATED ON A SUPPORT.
  - REFER TO SHEETS G-006 AND G-007 FOR LOCATION OF FIRE RATED WALLS.
  - FURNISHINGS AND EQUIPMENT BY OWNER ARE NOTED AS N.I.C. OR SHOWN DASHED.



**ELEMENT HOTEL**  
 BLOCK 9, LOTS 12.01 AND 12.11  
 WEST WINDSOR, NEW JERSEY

12/23/2022  
 ISSUED FOR 90%

Sheet Issue Date: 12/23/2022

Revisions:

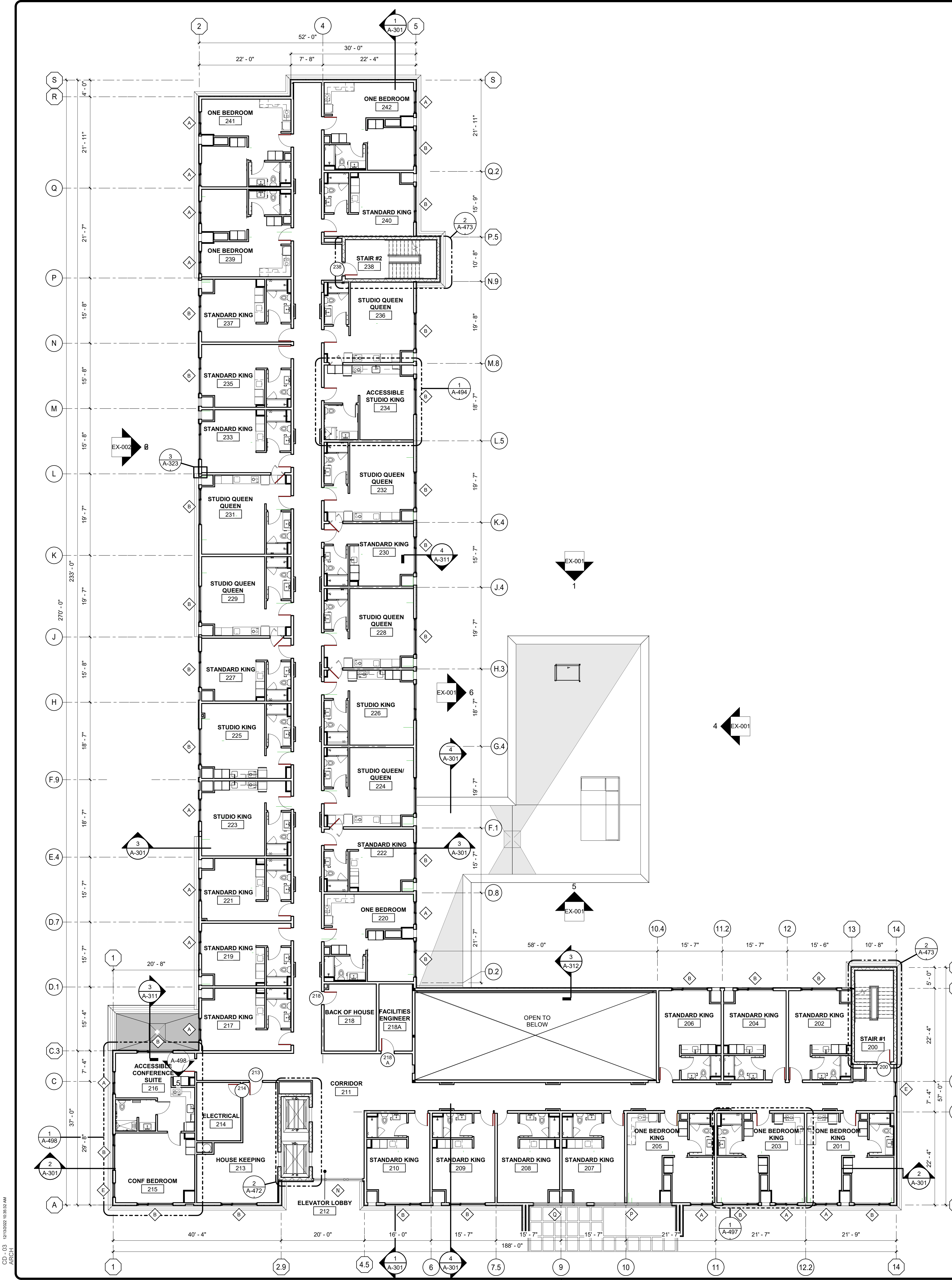
No.	Date	Description

FIRST FLOOR/ LOBBY  
 LEVEL PLAN OVERALL

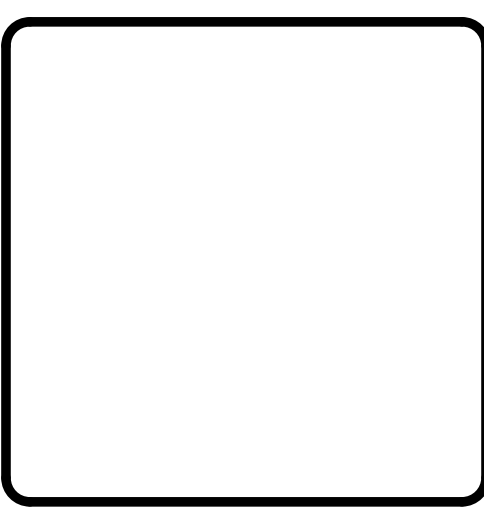
**A-101**  
 Project Number

**FIRST FLOOR PLAN OVERALL**  
 3/32" = 1'-0"  
 GRAPHIC SCALE

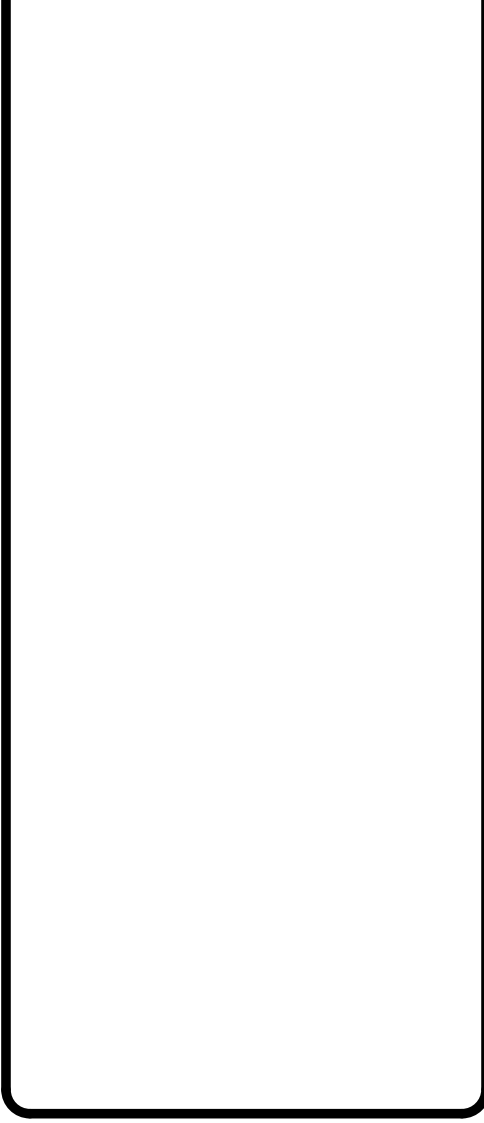
C:\15\_12132022\100819.dwg  
 ARCH1



- GENERAL NOTES**
1. DIMENSIONS SHOWN ARE TO FACE OF SHEATHING FOR EXTERIOR WALLS AND FACE OF STUD FOR INTERIOR PARTITIONS, U.N.O.
  2. GRID LINES IDENTIFY FACE OF SHEATHING FOR EXTERIOR WALLS AND CENTERLINE OF STUD FOR INTERIOR WALLS, U.N.O.
  3. REFER TO DRAWING A-801 FOR WALL TYPE DESCRIPTIONS AND DETAILS.
  4. PROVIDE MASONRY CONTROL JOINTS (C.J.) IN MASONRY AS REQUIRED BY SPECIFICATION SECTION (XXXX).
  5. ALL GYPSUM BOARD EDGES SHALL BE LOCATED ON A SUPPORT.
  6. REFER TO SHEETS G-006 AND G-007 FOR LOCATION OF FIRE RATED WALLS.
  7. FURNISHINGS AND EQUIPMENT BY OWNER ARE NOTED AS N.I.C. OR SHOWN DASHED.



**ELEMENT HOTEL**  
 BLOCK 9, LOTS 12.01 AND 12.11  
 WEST WINDSOR, NEW JERSEY



**12/23/2022**  
**ISSUED FOR 90%**

Sheet Issue Date: 12/23/2022

Revisions:	No.	Date	Description

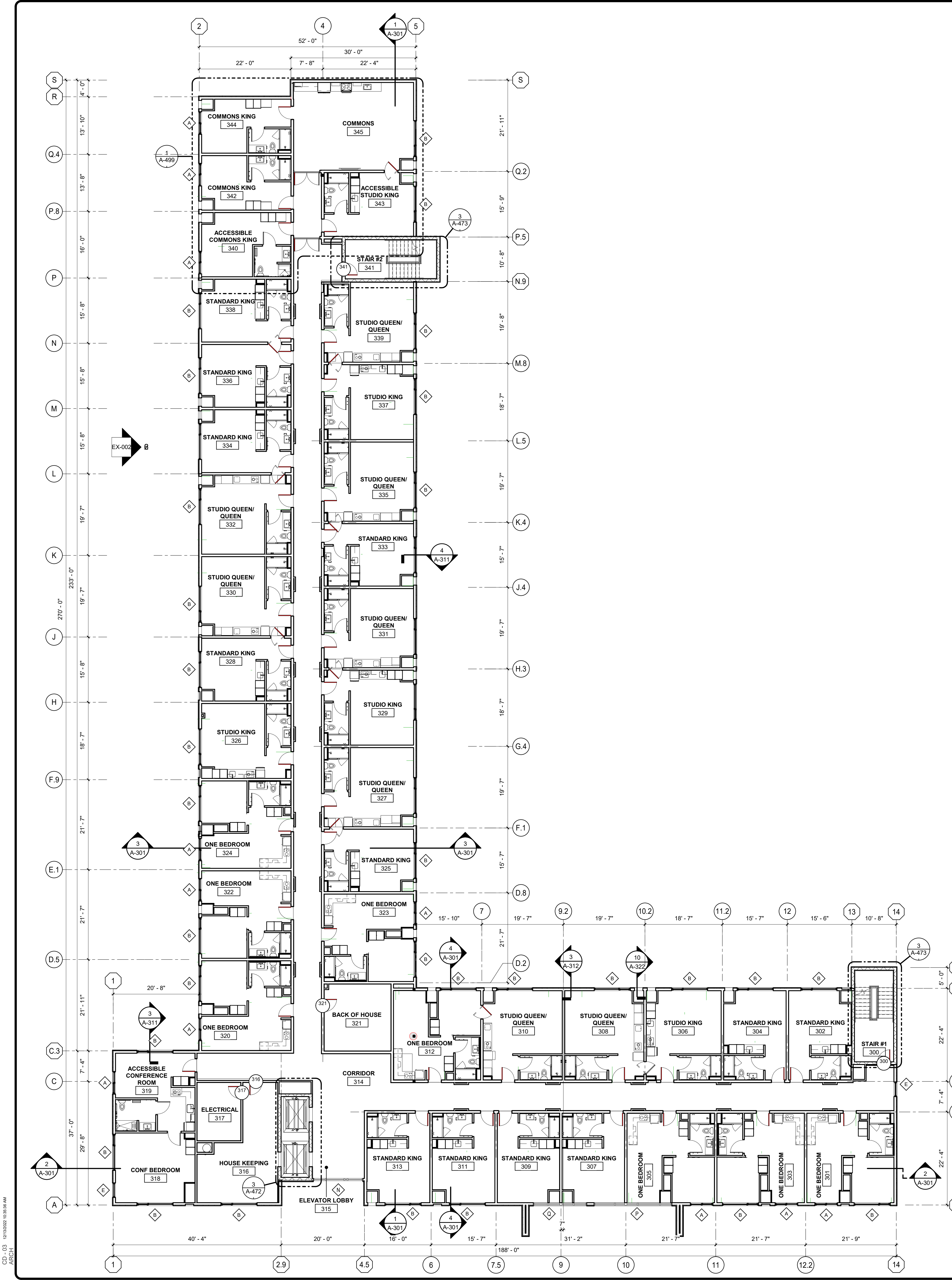
© copyright 2019  
 PRIME, ALL RIGHTS RESERVED.

**SECOND FLOOR PLAN OVERALL**

**A-102**  
 Project Number

**SECOND FLOOR PLAN OVERALL**  
 3/32" = 1'-0"  
 GRAPHIC SCALE  
 0 8' 16' 24'

CS: 105 12/13/2022 10:58:12 AM  
 ARCH



- GENERAL NOTES**
1. DIMENSIONS SHOWN ARE TO FACE OF SHEATHING FOR EXTERIOR WALLS AND FACE OF STUD FOR INTERIOR PARTITIONS, U.N.O.
  2. GRID LINES IDENTIFY FACE OF SHEATHING FOR EXTERIOR WALLS AND CENTERLINE OF STUD FOR INTERIOR WALLS, U.N.O.
  3. REFER TO DRAWING A-801 FOR WALL TYPE DESCRIPTIONS AND DETAILS.
  4. PROVIDE MASONRY CONTROL JOINTS (C.J.) IN MASONRY AS REQUIRED BY SPECIFICATION SECTION (XXXX)
  5. ALL GYPSUM BOARD EDGES SHALL BE LOCATED ON A SUPPORT
  6. REFER TO SHEETS G-006 AND G-007 FOR LOCATION OF FIRE RATED WALLS.
  7. FURNISHINGS AND EQUIPMENT BY OWNER ARE NOTED AS N.I.C. OR SHOWN DASHED.



**ELEMENT HOTEL**  
 BLOCK 9, LOTS 12.01 AND 12.11  
 WEST WINDSOR, NEW JERSEY

12/23/2022  
**ISSUED FOR 90%**

Sheet Issue Date: 12/23/2022

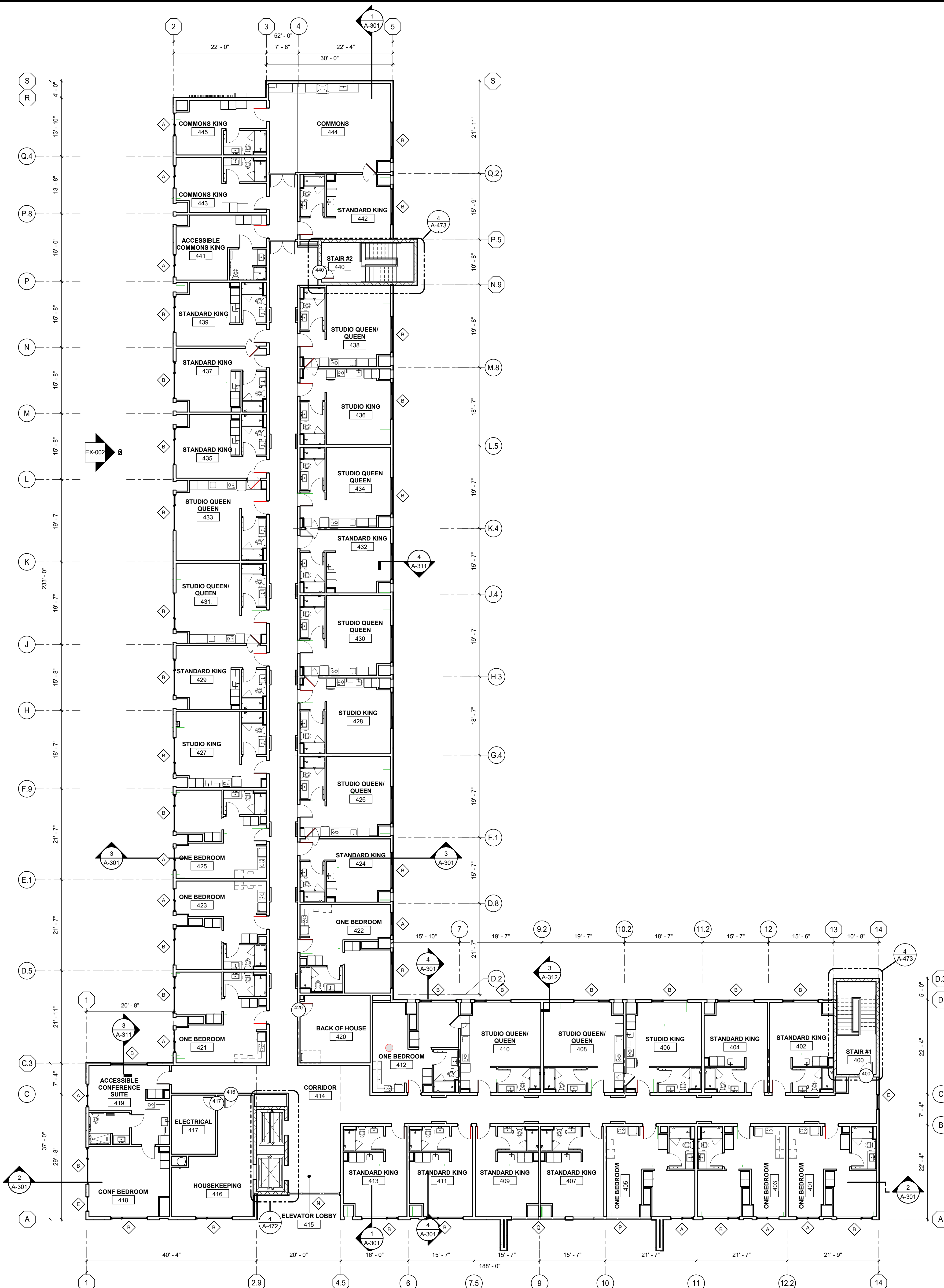
Revisions:	No.	Date	Description

**THIRD FLOOR PLAN OVERALL**  
 3/32" = 1'-0"  
 GRAPHIC SCALE  
 0 8' 16' 24'

**THIRD FLOOR PLAN OVERALL**

**A-103**  
 Project Number

CS: 10/17/2022 10:58:58 AM  
 ARCH:



- GENERAL NOTES**
1. DIMENSIONS SHOWN ARE TO FACE OF SHEATHING FOR EXTERIOR WALLS AND FACE OF STUD FOR INTERIOR PARTITIONS, U.N.O.
  2. GRID LINES IDENTIFY FACE OF SHEATHING FOR EXTERIOR WALLS AND CENTERLINE OF STUD FOR INTERIOR WALLS, U.N.O.
  3. REFER TO DRAWING A-801 FOR WALL TYPE DESCRIPTIONS AND DETAILS.
  4. PROVIDE MASONRY CONTROL JOINTS (C.J.) IN MASONRY AS REQUIRED BY SPECIFICATION SECTION (XXXX).
  5. ALL GYPSUM BOARD EDGES SHALL BE LOCATED ON A SUPPORT.
  6. REFER TO SHEETS G-006 AND G-007 FOR LOCATION OF FIRE RATED WALLS.
  7. FURNISHINGS AND EQUIPMENT BY OWNER ARE NOTED AS N.I.C. OR SHOWN DASHED.



**ELEMENT HOTEL**  
 BLOCK 9, LOTS 12.01 AND 12.11  
 WEST WINDSOR, NEW JERSEY

12/23/2022  
 ISSUED FOR 90%

Sheet Issue Date: 12/23/2022

Revisions:	No.	Date	Description

**FOURTH FLOOR PLAN OVERALL**  
 3/32" = 1'-0"  
 GRAPHIC SCALE  
 0 8' 16' 24'

FOURTH FLOOR PLAN OVERALL  
**A-104**  
 Project Number

CS: 10/13/2022 10:58:39 AM  
 ARCH:

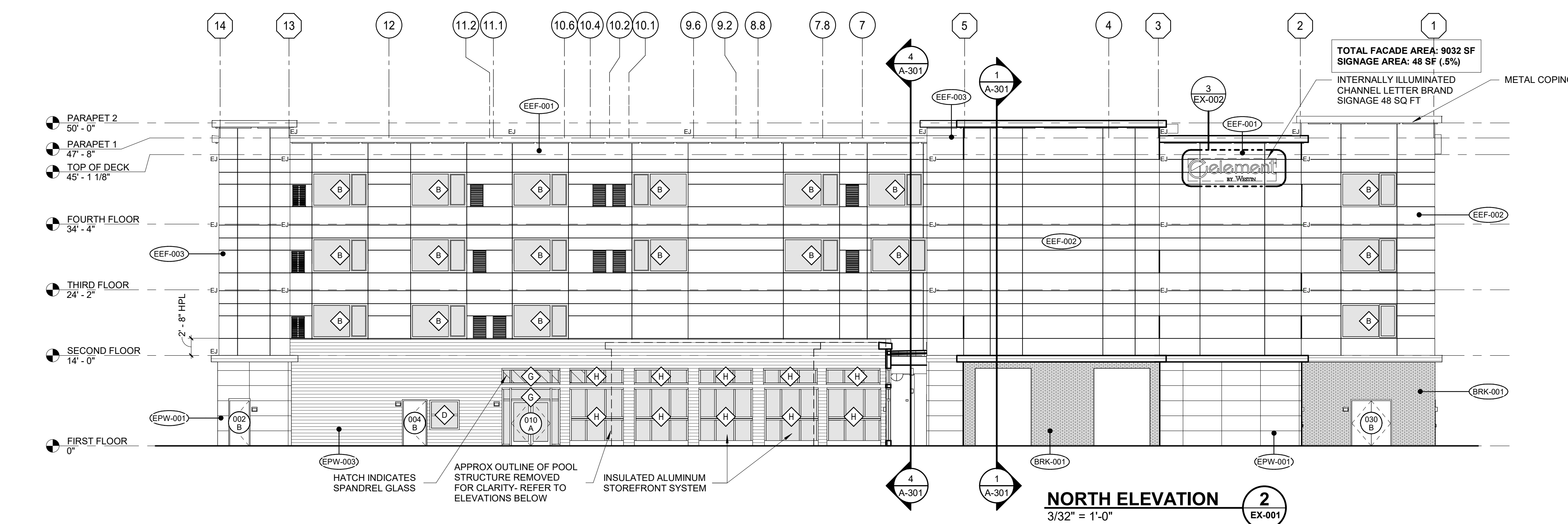
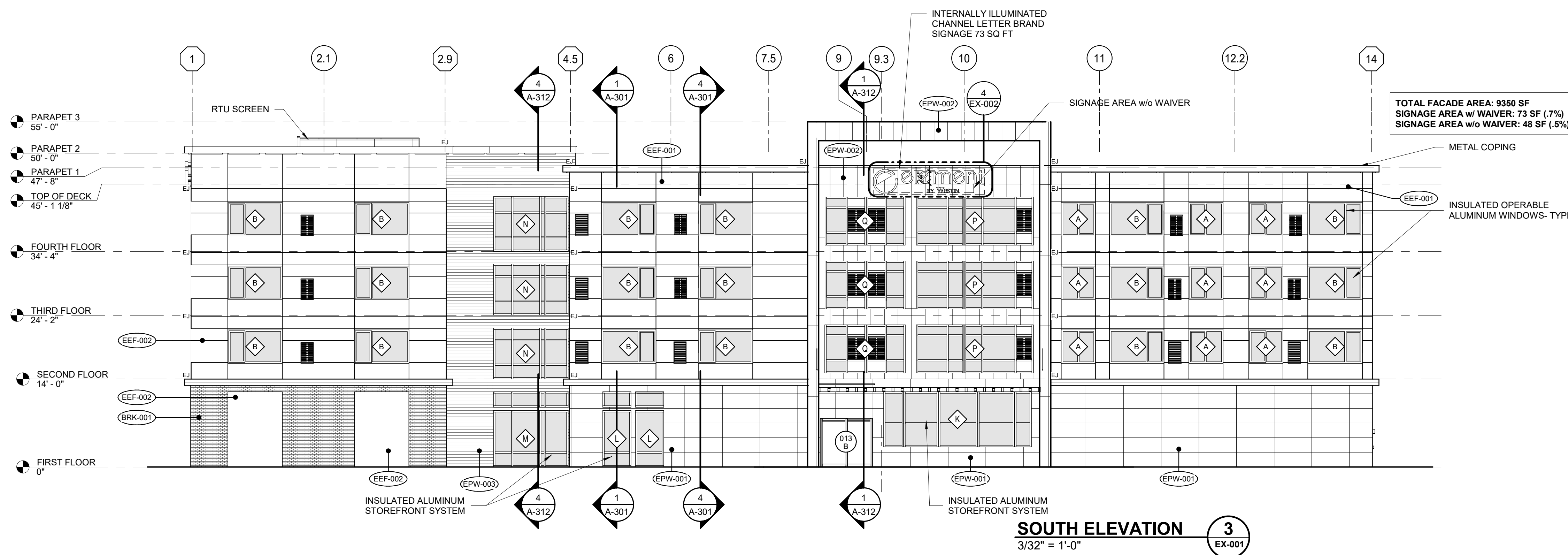
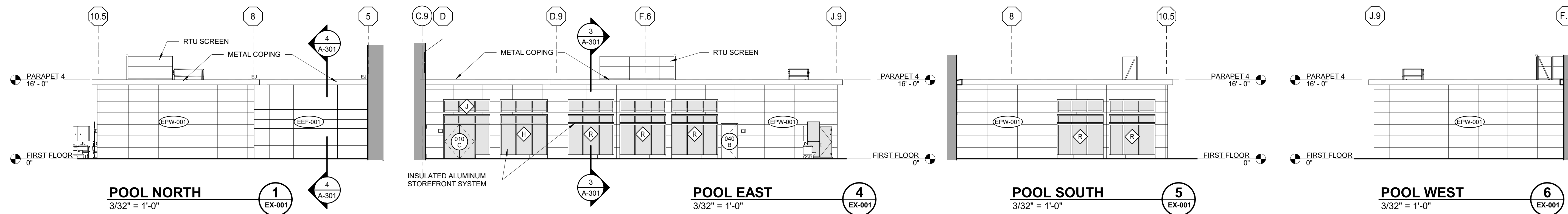
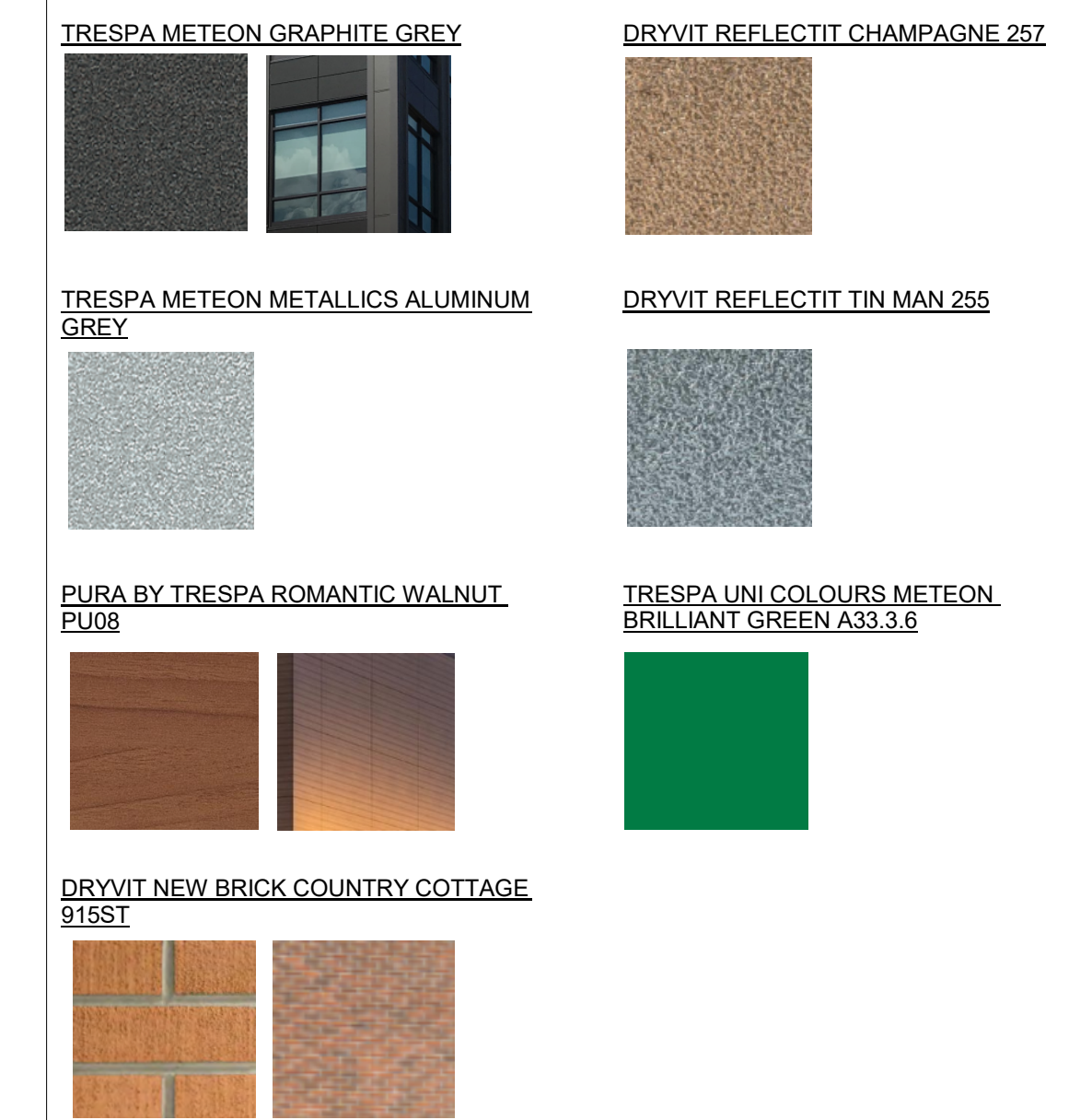
**GENERAL NOTES**

- SEE PLANS A-101 THRU A-104 AND SCHEDULES A-601 AND A-6-111 FOR DOOR AND WINDOW INFORMATION.
- PROVIDE CAULK JOINTS AT PERIMETER OF ALL PENETRATIONS THROUGH EIFS.
- PROVIDE EXPANSION JOINTS (EJ) IN EIFS AS INDICATED ON PLANS AND AT ALL LOCATIONS WHERE DISSIMILAR MATERIALS OR CONSTRUCTION ADJOIN AND AT FLOOR LINES. SEE 3/A-323, 6/A-323, 11/A-323, AND 12/A-323 FOR EXPANSION JOINT CONSTRUCTION.
- PROVIDE EXTERIOR GRADE PRESSURE TREATED PLYWOOD BACKING BEHIND BUILDING SIGNAGE AS REQUIRED FOR ATTACHMENT.
- EIFS JOINTS NOT DESIGNATED AS EXPANSION JOINTS ARE CONTROL JOINTS. SEE DETAIL 13/A-323 FOR EIFS CONTROL JOINT.

**EXTERIOR MATERIALS LEGEND**

- (EPW-001) TRESPA METEON GRAPHITE GREY
  - (EPW-002) TRESPA METEON METALLICS ALUMINUM GREY
  - (EPW-003) PURA BY TRESPA ROMANTIC WALNUT PU08
  - (BRK-001) DRYVIT NEW BRICK COUNTRY COTTAGE 915ST
  - (EEF-001) DRYVIT REFLECTIT CHAMPAGNE 257
  - (EEF-002) DRYVIT REFLECTIT TIN MAN 255
  - (EEF-003) DRYVIT REFLECTIT TIN MAN 255 (MODIFIED TO LIGHTER)
  - (EEF-004) TRESPA UNI COLOURS METEON BRILLIANT GREEN A33.3.6
- SEE SPECIFICATION SECTION 090000 FOR FINISH INFORMATION

**EXTERIOR MATERIALS**



**ELEMENT HOTEL**

BLOCK 9, LOTS 12.01 AND 12.11  
WEST WINDSOR, NEW JERSEY

12/23/2022

ISSUED FOR 90%

Sheet Issue Date: 12/08/22

Revisions:

No. Date Description

SIGNAGE EXHIBIT

**EX-001**

Project Number

- GENERAL NOTES**
- SEE PLANS A-101 THRU A-104 AND SCHEDULES A-601 AND A-6-111 FOR DOOR AND WINDOW INFORMATION.
  - PROVIDE CAULK JOINTS AT PERIMETER OF ALL PENETRATIONS THROUGH EIFS.
  - PROVIDE EXPANSION JOINTS (EJ) IN EIFS AS INDICATED ON PLANS AND AT ALL LOCATIONS WHERE DISSIMILAR MATERIALS OR CONSTRUCTION ADJOIN AND AT FLOOR LINES. SEE 9/A-323, 6/A-323, 11/A-323, AND 12/A-323 FOR EXPANSION JOINT CONSTRUCTION.
  - PROVIDE EXTERIOR GRADE PRESSURE TREATED PLYWOOD BACKING BEHIND BUILDING SIGNAGE AS REQUIRED FOR ATTACHMENT.
  - EIFS JOINTS NOT DESIGNATED AS EXPANSION JOINTS ARE CONTROL JOINTS. SEE DETAIL 13/A-323 FOR EIFS CONTROL JOINT.

**EXTERIOR MATERIALS LEGEND**

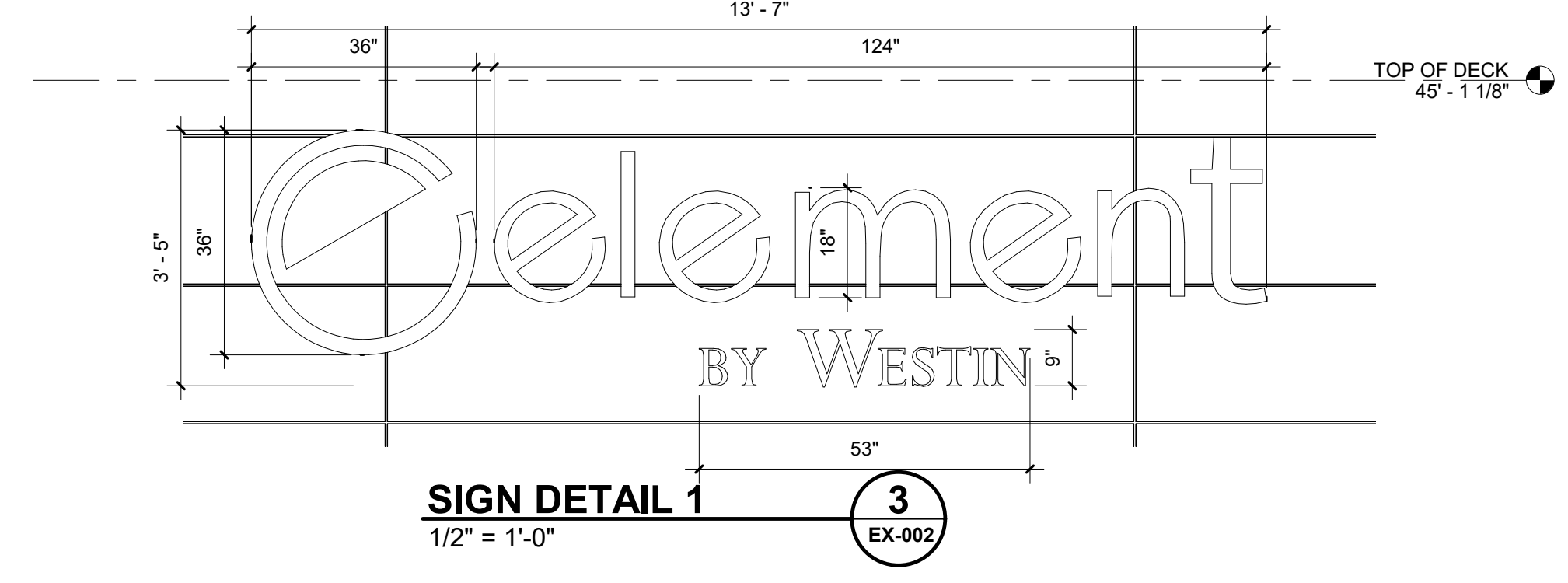
EPW-001	TRESPA METEON GRAPHITE GREY
EPW-002	TRESPA METEON METALLICS ALUMINUM GREY
EPW-003	PURA BY TRESPA ROMANTIC WALNUT PU08
BRK-001	DRYVIT NEW BRICK COUNTRY COTTAGE 915ST
EEF-001	DRYVIT REFLECTIT CHAMPAGNE 257
EEF-002	DRYVIT REFLECTIT TIN MAN 255
EEF-003	DRYVIT REFLECTIT TIN MAN 255 (MODIFIED TO LIGHTER)
EEF-004	TRESPA UNI COLOURS METEON BRILLIANT GREEN A33.3.6

SEE SPECIFICATION SECTION 090000 FOR FINISH INFORMATION

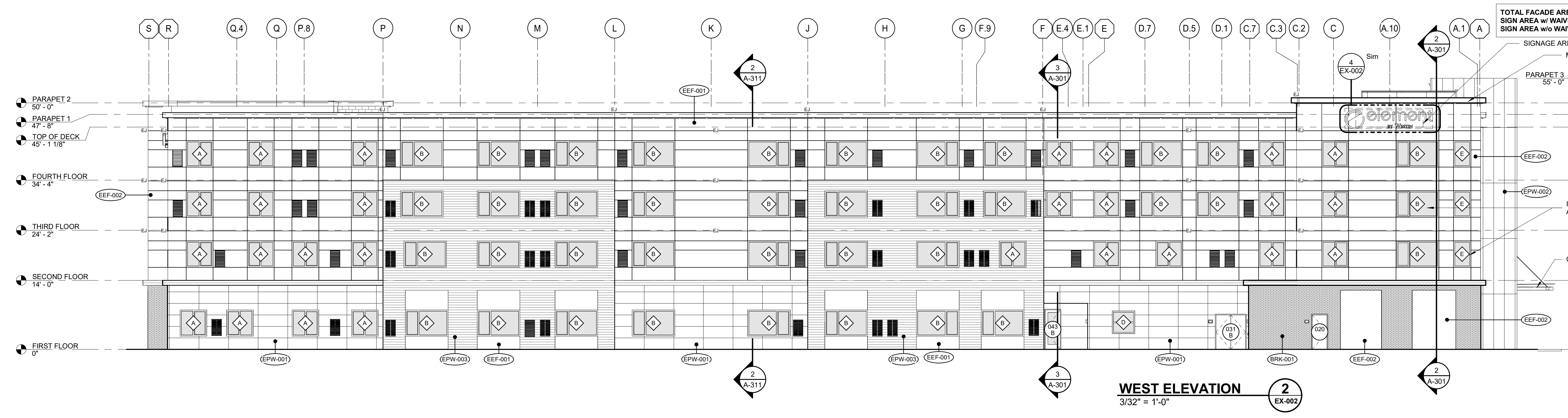
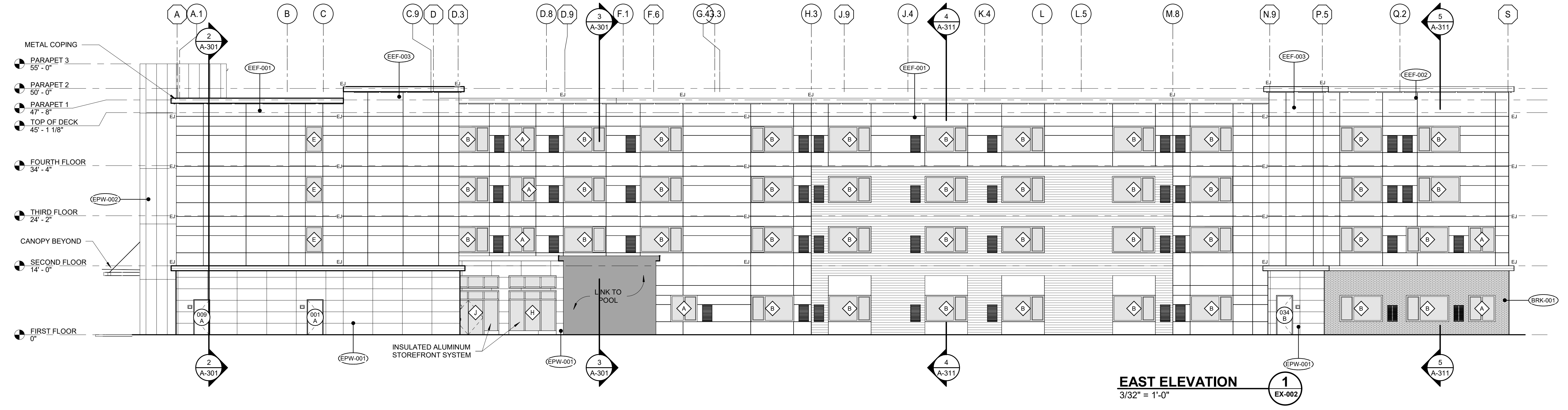
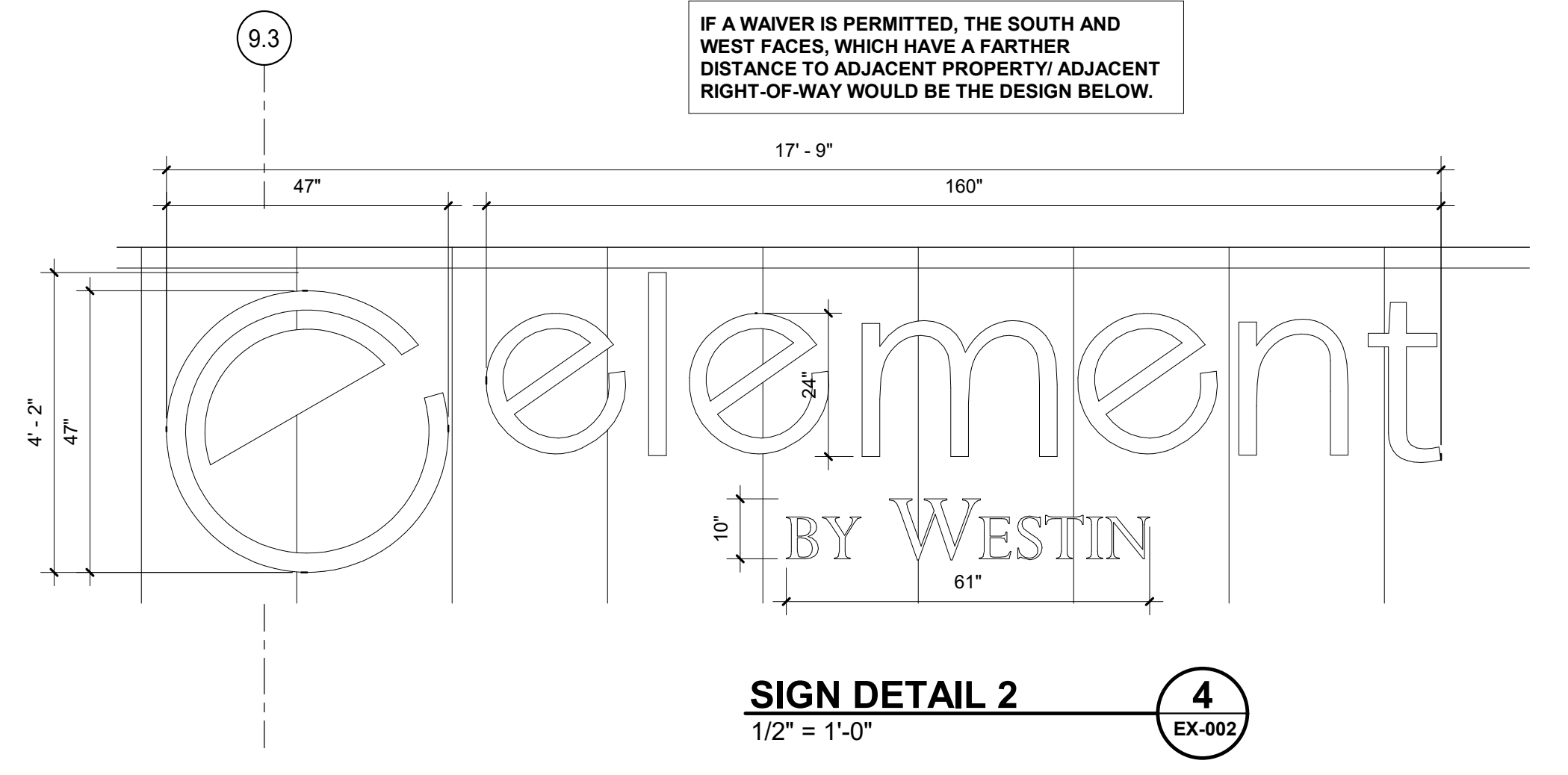
**EXTERIOR MATERIALS**

TRESPA METEON GRAPHITE GREY	DRYVIT REFLECTIT CHAMPAGNE 257
TRESPA METEON METALLICS ALUMINUM GREY	DRYVIT REFLECTIT TIN MAN 255
PURA BY TRESPA ROMANTIC WALNUT PU08	TRESPA UNI COLOURS METEON BRILLIANT GREEN A33.3.6
DRYVIT NEW BRICK COUNTRY COTTAGE 915ST	

SECTION 200-32B REQUIRES ALL SIGNS TO BE SIZED PER THE LIMITING FACADE. THIS DETAIL WOULD APPLY FOR ALL SIGNAGE UNDER THIS CODE.



IF A WAIVER IS PERMITTED, THE SOUTH AND WEST FACES, WHICH HAVE A FARTHER DISTANCE TO ADJACENT PROPERTY ADJACENT RIGHT-OF-WAY WOULD BE THE DESIGN BELOW.



TOTAL FACADE AREA: 12934 SF  
 SIGN AREA w/ WAIVER: 73 SF (.5%)  
 SIGN AREA w/o WAIVER: 48 SF (.3%)

**ELEMENT HOTEL**  
 BLOCK 9, LOTS 12.01 AND 12.11  
 WEST WINDSOR, NEW JERSEY

12/23/2022  
 ISSUED FOR 90%

Sheet Issue Date: 12/08/22  
 Revisions:  
 No. Date Description

SIGNAGE EXHIBIT

**EX-002**  
 Project Number