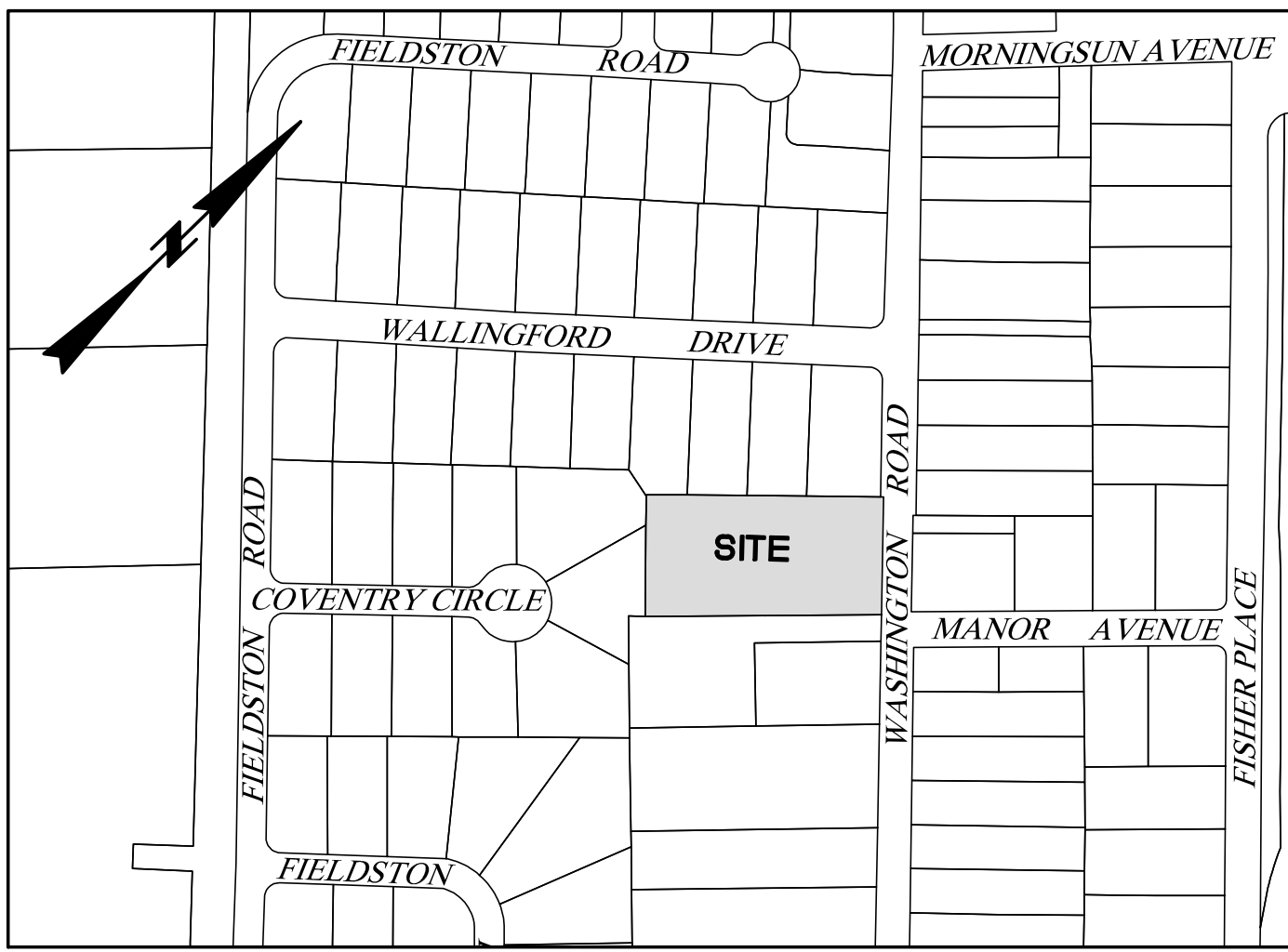


NOTES

1. This survey is only valid when embossed seal is affixed hereto.
2. The certification shown hereon is not transferable to additional institutions or subsequent owners.
3. The Reynolds Group, Inc. and/or its employees are not liable for errors within, and/or omissions from any documents provided by others.
4. A Written Waiver and Direction Not to Set Corner Markers has been obtained from the ultimate user pursuant to P.L. 2003, c.14(N.J.S.A. 45:8-36.3) and N.J.A.C. 13:40-5.1(d).
5. Underground utilities shown hereon are approximate, their accuracy or completeness are not guaranteed by the surveyor. Mark outs from utility companies and field confirmation by the contractor must be made prior to construction so that disturbance or disruption to these utilities may be avoided.
6. Horizontal Datum is NAD83(2011) EPOCH(2010.00) (U.S. SURVEY FOOT) and Vertical Datum is NAVD 88(GEOD 12A) based on GPS observations.
7. All Bearings and Coordinates shown hereon are GRID. All distances shown are SURFACE. To convert surface distances to GRID, multiply by the COMBINED SCALE FACTOR of 0.99989806.
8. Block 6 Lot 72 is in an unshaded Zone X, an Area determined to be outside the 0.2% annual chance floodplain, per Ref. #5.

REFERENCES

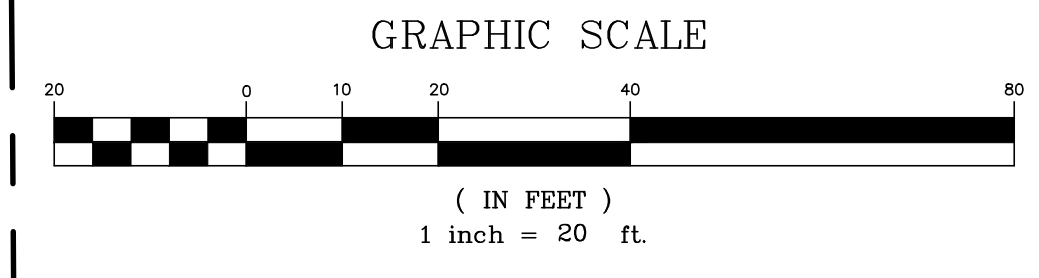
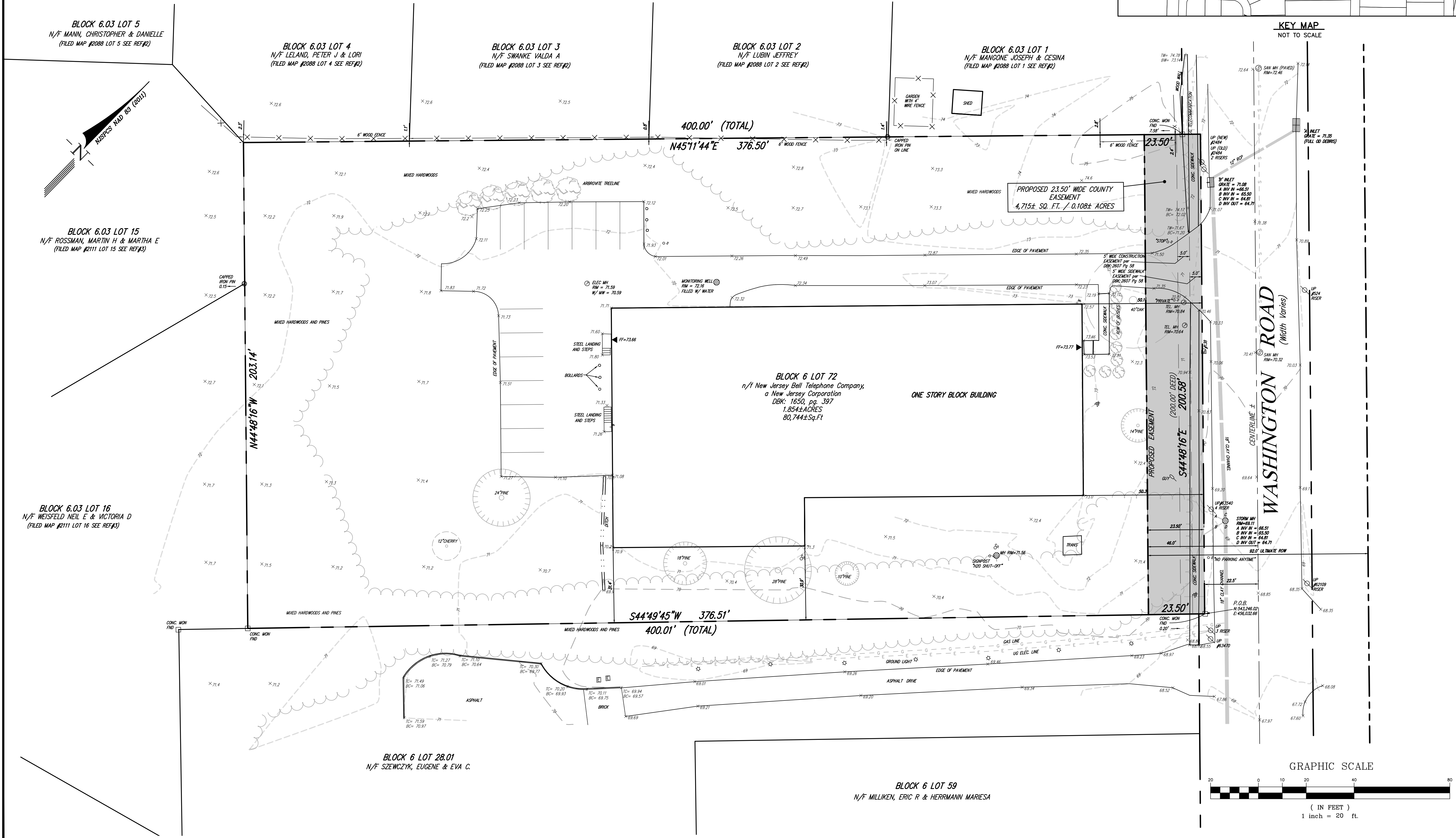
1. Official Tax Map of the Township of West Windsor, Sheet No. 5.03.
2. Map entitled, "Section Two Langmeadow, West Windsor Twp., Mercer County, N.J." dated April 23, 1971 and prepared by Trenton Engineering Co., Inc., map filed the Office of the Clerk of Mercer County on May 28, 1971 as Map No. 2088.
3. Map entitled, "Section Three Langmeadow, West Windsor Twp., Mercer County, N.J." dated November 17, 1970 and prepared by Trenton Engineering Co., Inc., map filed the Office of the Clerk of Mercer County on November 10, 1971 as Map No. 2111.
4. Informational Search Report date June 19, 2020 and prepared Shore Title.
5. Map entitled, FIRM Flood Insurance Rate Map Mercer County, New Jersey (All Jurisdictions) Panel 134 of 276" Map Number 34021C0134F, Effective Date July 20, 2016.



revisions			
no.	date	description	by
1	10-27-21	UPDATE TITLE BLOCK	HCL
2	3-8-22	ADD PROPOSED ROAD EASEMENT	TW

LEGEND

- ⊕ GAS VALVE
- ⊕ GAS METER
- ⊕ WATER VALVE
- ⊕ HYDRANT
- ⊕ WATER METER
- ⊕ CURB STOP
- ⊕ DRAINAGE MH
- ⊕ CURB INLET
- ⊕ LAWN INLET
- ⊕ DOUBLE INLET
- ⊕ FLAT INLET
- ⊕ SANITARY MH
- ⊕ CLEANOUT
- ⊕ BOLLARD
- ⊕ SIGN
- ⊕ LIGHT
- ⊕ GUY WIRE
- ⊕ UTILITY POLE
- ⊕ ELECTRIC MH
- ⊕ CONIFEROUS TREE
- ⊕ DECIDUOUS TREE
- X - FENCE
- ⊕ GATE POST
- W - WATER LINE
- G - GAS LINE
- E - ELECTRIC LINE
- S - SANITARY LINE
- OH - OVERHEAD WIRES
- T - TELCO LINE
- ⊕ MONITORING WELL
- ⊕ TRAFFIC SIGNAL
- ⊕ TELCO MH
- ⊕ MONUMENT SET
- ⊕ CAPPED IRON PIN FOUND
- ⊕ CAPPED IRON PIN SET



The Reynolds Group Inc.
 State of New Jersey
 Certificate of Authorization
 Number 24GA27969200
 Number 21MH00004300
 F. Mitchel Ardman, P.E., P.P.
 Jeffrey D. Reynolds, P.L.A.

HOWARD C. LOPSHIRE
 PROFESSIONAL LAND SURVEYOR
 NJ LIC. No. 24GS02680300

drawing title		BOUNDARY and TOPOGRAPHIC SURVEY of BLOCK 6, LOT 72 TOWNSHIP OF WEST WINDSOR MERCER COUNTY, NEW JERSEY	
job number	20-010	drawing number	BT-1
scale	1"=20'	checked by	HCL
drawn by	TW	date	7/9/2020
sheet 1 of 1			

S:\LVL_3D_SURVEY_PROJECTS\2020\20-010_COVENTRY_WEST_WINDSOR\20-010_COVENTRY_WEST_WINDSOR\REVISED\42727223