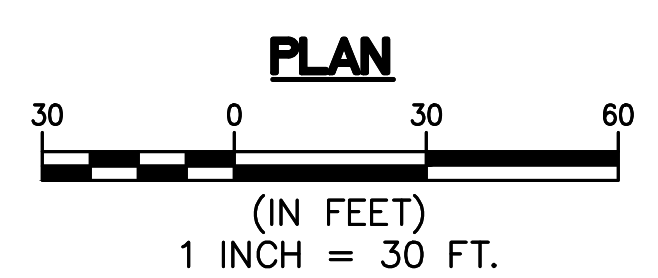


ITEM NO.	TO BE CONSTRUCTED	CONTRACT QUANTITY
157006M	MONUMENT	3 U.
202021P	REMOVAL OF PAVEMENT	4017 S.Y.
302042P	DENSE-GRADED AGGREGATE BASE COURSE, 8" THICK	2914 S.Y.
401009P	HMA MILLING, 3" OR LESS	8763 S.Y.
401021M	HOT MIX ASPHALT PAVEMENT REPAIR	1754 S.Y.
401030M	TACK COAT	370 GAL.
401036M	PRIME COAT	78 GAL.
401042M	HOT MIX ASPHALT 9.5 M 64 SURFACE COURSE	1273 TON
401096M	HOT MIX ASPHALT 19 M 64 BASE COURSE	992 TON
606012P	CONCRETE SIDEWALK, 4" THICK	1516 S.Y.
606039P	HOT MIX ASPHALT DRIVEWAY, 6" THICK	1115 S.Y.

ITEM NO.	TO BE CONSTRUCTED	CONTRACT QUANTITY
606084P	DETECTABLE WARNING SURFACE	16 S.Y.
607032P	9" X 16" CONCRETE VERTICAL CURB WITH GUTTER	3835 L.F.
802021M	TREE REMOVAL OVER 6" TO 12" DIAMETER	14 U.
802024M	TREE REMOVAL OVER 12" TO 18" DIAMETER	8 U.
804000P	TOPSOIL SPREADING 5" THICK	25 S.Y.
806006P	FERTILIZING AND SEEDING, TYPE A-3	25 S.Y.
809003P	STRAW MULCHING	25 S.Y.



wsp

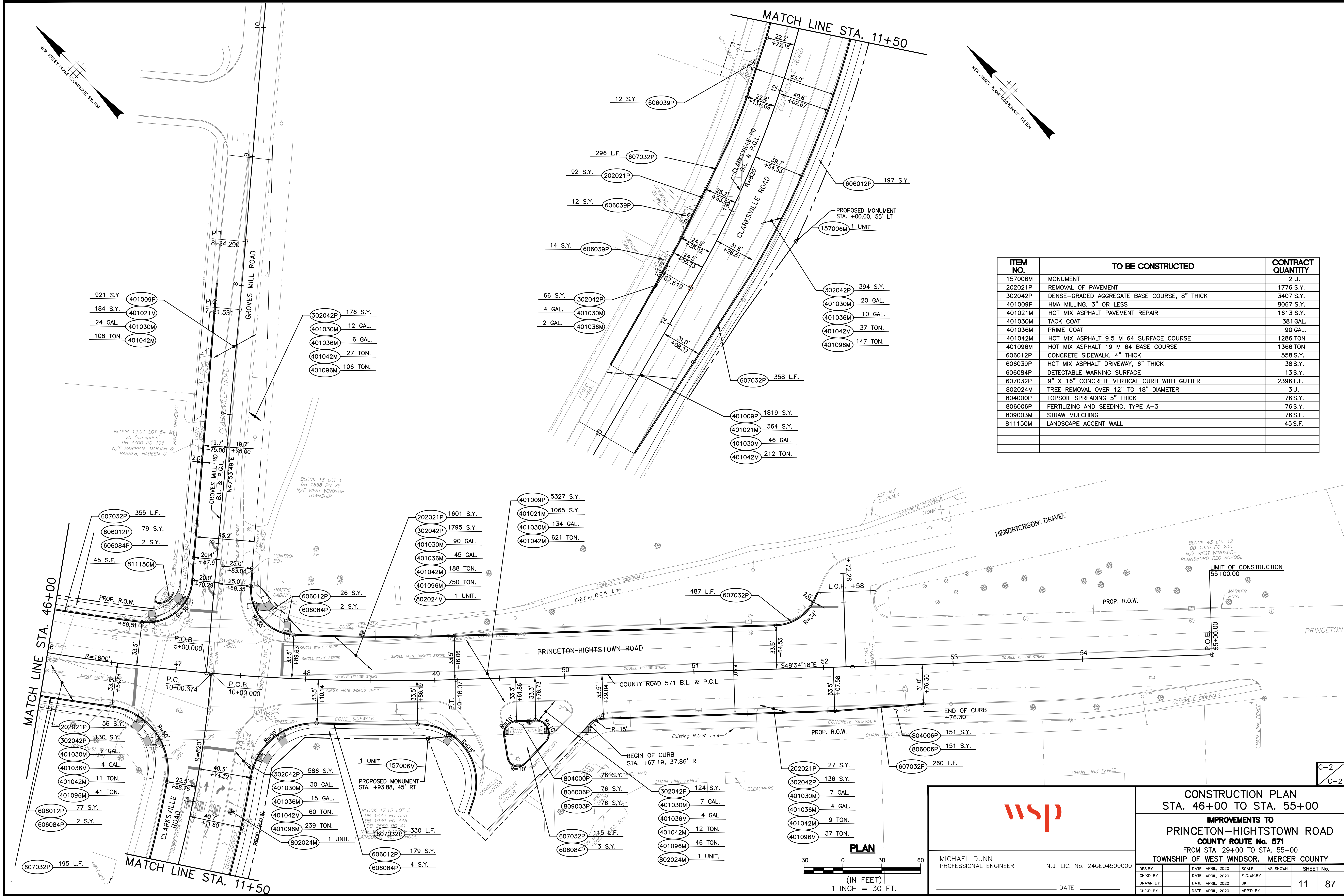
MICHAEL DUNN
PROFESSIONAL ENGINEER
N.J. LIC. No. 24GE0450000

DATE _____

CONSTRUCTION PLAN
STA. 29+00 TO STA. 46+00

IMPROVEMENTS TO
PRINCETON-HIGHTSTOWN ROAD
COUNTY ROUTE No. 571
FROM STA. 29+00 TO STA. 55+00
TOWNSHIP OF WEST WINDSOR, MERCER COUNTY

DES. BY	DATE	SCALE	AS SHOWN	SHEET No.
CH'KD BY	DATE	APRIL, 2020	FLD.WK.BY	
DRAWN BY	DATE	APRIL, 2020	BK.	10
CH'KD BY	DATE	APRIL, 2020	APP'D BY	87



ITEM NO.	TO BE CONSTRUCTED	CONTRACT QUANTITY
157006M	MONUMENT	2 U.
202021P	REMOVAL OF PAVEMENT	1776 S.Y.
302042P	DENSE-GRADED AGGREGATE BASE COURSE, 8" THICK	3407 S.Y.
401009P	HMA MILLING, 3" OR LESS	8067 S.Y.
401021M	HOT MIX ASPHALT PAVEMENT REPAIR	1613 S.Y.
401030M	TACK COAT	381 GAL.
401036M	PRIME COAT	90 GAL.
401042M	HOT MIX ASPHALT 9.5 M 64 SURFACE COURSE	1286 TON
401096M	HOT MIX ASPHALT 19 M 64 BASE COURSE	1366 TON
606012P	CONCRETE SIDEWALK, 4" THICK	558 S.Y.
606039P	HOT MIX ASPHALT DRIVEWAY, 6" THICK	38 S.Y.
606084P	DETECTABLE WARNING SURFACE	13 S.Y.
607032P	9" X 16" CONCRETE VERTICAL CURB WITH GUTTER	2396 L.F.
802024M	TREE REMOVAL OVER 12" TO 18" DIAMETER	3 U.
804000P	TOPSOIL SPREADING 5" THICK	76 S.Y.
806006P	FERTILIZING AND SEEDING, TYPE A-3	76 S.Y.
809003M	STRAW MULCHING	76 S.F.
811150M	LANDSCAPE ACCENT WALL	45 S.F.

wsp

MICHAEL DUNN
PROFESSIONAL ENGINEER
N.J. LIC. No. 24GE0450000

DATE _____

CONSTRUCTION PLAN
STA. 46+00 TO STA. 55+00

IMPROVEMENTS TO
PRINCETON-HIGHTSTOWN ROAD
COUNTY ROUTE No. 571
FROM STA. 29+00 TO STA. 55+00
TOWNSHIP OF WEST WINDSOR, MERCER COUNTY

DES. BY	DATE	APRIL, 2020	SCALE	AS SHOWN	SHEET NO.
CHK'D BY	DATE	APRIL, 2020	FLD. WK. BY		
DRAWN BY	DATE	APRIL, 2020	BK.		11
CHK'D BY	DATE	APRIL, 2020	APP'D BY		87

