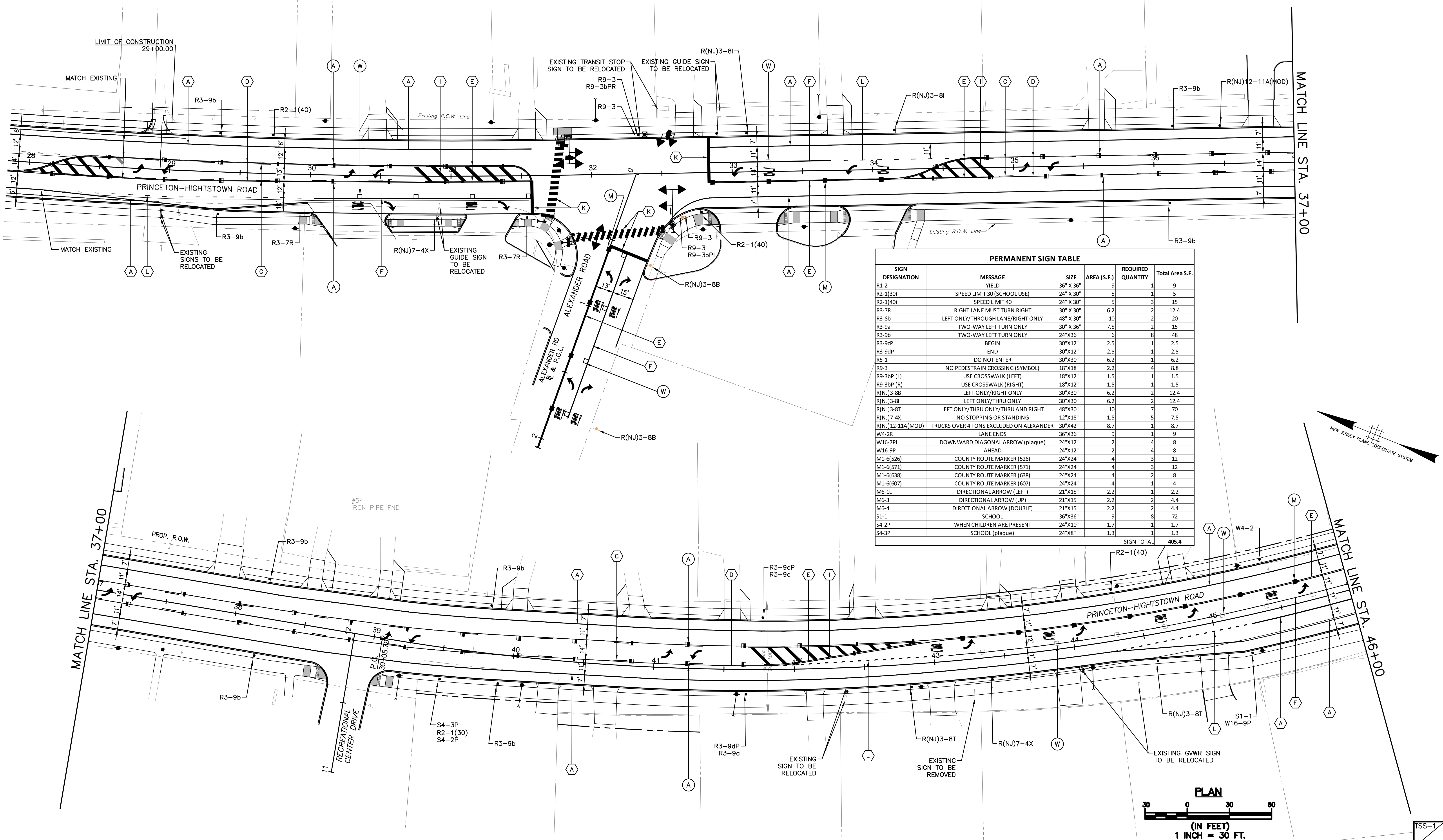


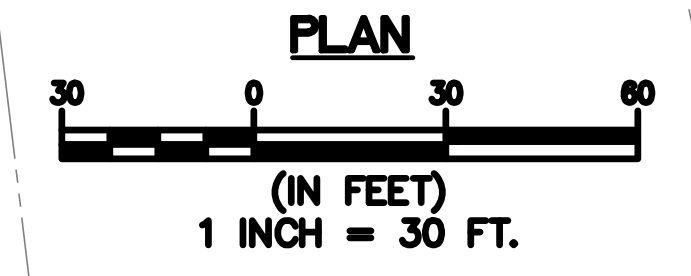
pw:\bgh-eus2-pw-bentley.com\gh-eus2-pw-11\Documents\Transportation Commission\2005163-Route 571 Final Design\Technical\Cadd-Contract\2\Sheet Files\15_Signing & Striping Plans.dwg - 18/2025



PERMANENT SIGN TABLE					
SIGN DESIGNATION	MESSAGE	SIZE	AREA (S.F.)	REQUIRED QUANTITY	Total Area S.F.
R1-2	YIELD	36" X 36"	9	1	9
R2-1(30)	SPEED LIMIT 30 (SCHOOL USE)	24" X 30"	5	1	5
R2-1(40)	SPEED LIMIT 40	24" X 30"	5	3	15
R3-7R	RIGHT LANE MUST TURN RIGHT	30" X 30"	6.2	2	12.4
R3-8b	LEFT ONLY/THROUGH LANE/RIGHT ONLY	48" X 30"	10	2	20
R3-9a	TWO-WAY LEFT TURN ONLY	30" X 36"	7.5	2	15
R3-9b	TWO-WAY LEFT TURN ONLY	24" X 36"	6	8	48
R3-9cP	BEGIN	30" X 12"	2.5	1	2.5
R3-9dP	END	30" X 12"	2.5	1	2.5
R5-1	DO NOT ENTER	30" X 30"	6.2	1	6.2
R9-3	NO PEDESTRIAN CROSSING (SYMBOL)	18" X 18"	2.2	4	8.8
R9-3bP (L)	USE CROSSWALK (LEFT)	18" X 12"	1.5	1	1.5
R9-3bP (R)	USE CROSSWALK (RIGHT)	18" X 12"	1.5	1	1.5
R(NJ)3-8B	LEFT ONLY/RIGHT ONLY	30" X 30"	6.2	2	12.4
R(NJ)3-8I	LEFT ONLY/THRU ONLY	30" X 30"	6.2	2	12.4
R(NJ)3-8T	LEFT ONLY/THRU ONLY/THRU AND RIGHT	48" X 30"	10	7	70
R(NJ)7-4X	NO STOPPING OR STANDING	12" X 18"	1.5	5	7.5
R(NJ)12-11A(MOD)	TRUCKS OVER 4 TONS EXCLUDED ON ALEXANDER	30" X 42"	8.7	1	8.7
W4-2R	LANE ENDS	36" X 36"	9	1	9
W16-7PL	DOWNWARD DIAGONAL ARROW (plaque)	24" X 12"	2	4	8
W16-9P	AHEAD	24" X 12"	2	4	8
M1-6(526)	COUNTY ROUTE MARKER (526)	24" X 24"	4	3	12
M1-6(571)	COUNTY ROUTE MARKER (571)	24" X 24"	4	3	12
M1-6(638)	COUNTY ROUTE MARKER (638)	24" X 24"	4	2	8
M1-6(607)	COUNTY ROUTE MARKER (607)	24" X 24"	4	1	4
M6-1L	DIRECTIONAL ARROW (LEFT)	21" X 15"	2.2	1	2.2
M6-3	DIRECTIONAL ARROW (UP)	21" X 15"	2.2	2	4.4
M6-4	DIRECTIONAL ARROW (DOUBLE)	21" X 15"	2.2	2	4.4
S1-1	SCHOOL	36" X 36"	9	8	72
S4-2P	WHEN CHILDREN ARE PRESENT	24" X 10"	1.7	1	1.7
S4-3P	SCHOOL (plaque)	24" X 8"	1.3	1	1.3
SIGN TOTAL					405.4

- LEGEND**
- (A) 4" SOLID WHITE LINE
 - (B) 4" DASHED WHITE LINE
 - (C) 4" DASHED YELLOW LINE
 - (D) 4" SOLID YELLOW LINE
 - (E) 2 - 4" SOLID YELLOW LINES
 - (F) 8" SOLID WHITE LINE
 - (G) 6" SOLID WHITE LINE
 - (H) 24" SOLID WHITE LINES SPACED 12' c to c @ 45°
 - (I) 24" SOLID YELLOW LINES SPACED 12' c to c @ 45°
 - (J) 4" DASHED WHITE LINES 2' LINE WITH 4' SPACE
 - (K) 24" SOLID WHITE LINE
 - (L) 4" DASHED WHITE LINES 3' LINE WITH 9' SPACE

- TYPICAL DASHED LINE DETAIL**
NOT TO SCALE
- (A) TWO-WAY PLOWABLE MONO-DIRECTIONAL AMBER PAVEMENT REFLECTOR
 - (W) TWO-WAY PLOWABLE MONO-DIRECTIONAL WHITE PAVEMENT REFLECTOR
 - (M) TWO-WAY PLOWABLE BI-DIRECTIONAL AMBER PAVEMENT REFLECTOR



WSP USA SOLUTIONS, INC.
CERTIFICATE OF AUTHORIZATION NO. 24GA27933700

MICHAEL DUNN
PROFESSIONAL ENGINEER

N.J. LIC. No. 24GE04500000

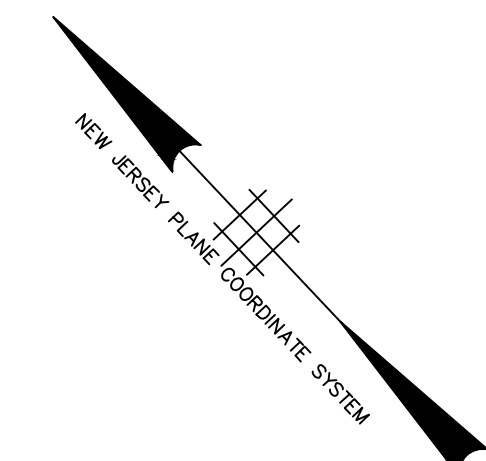
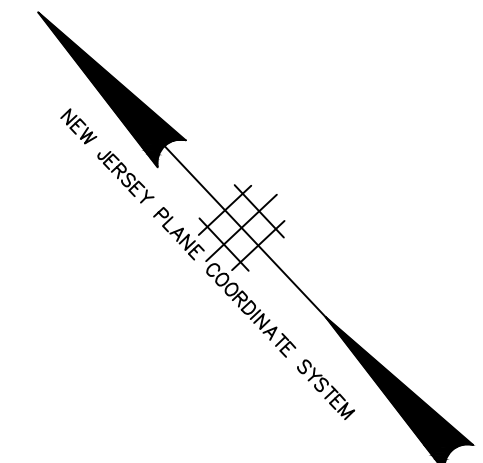
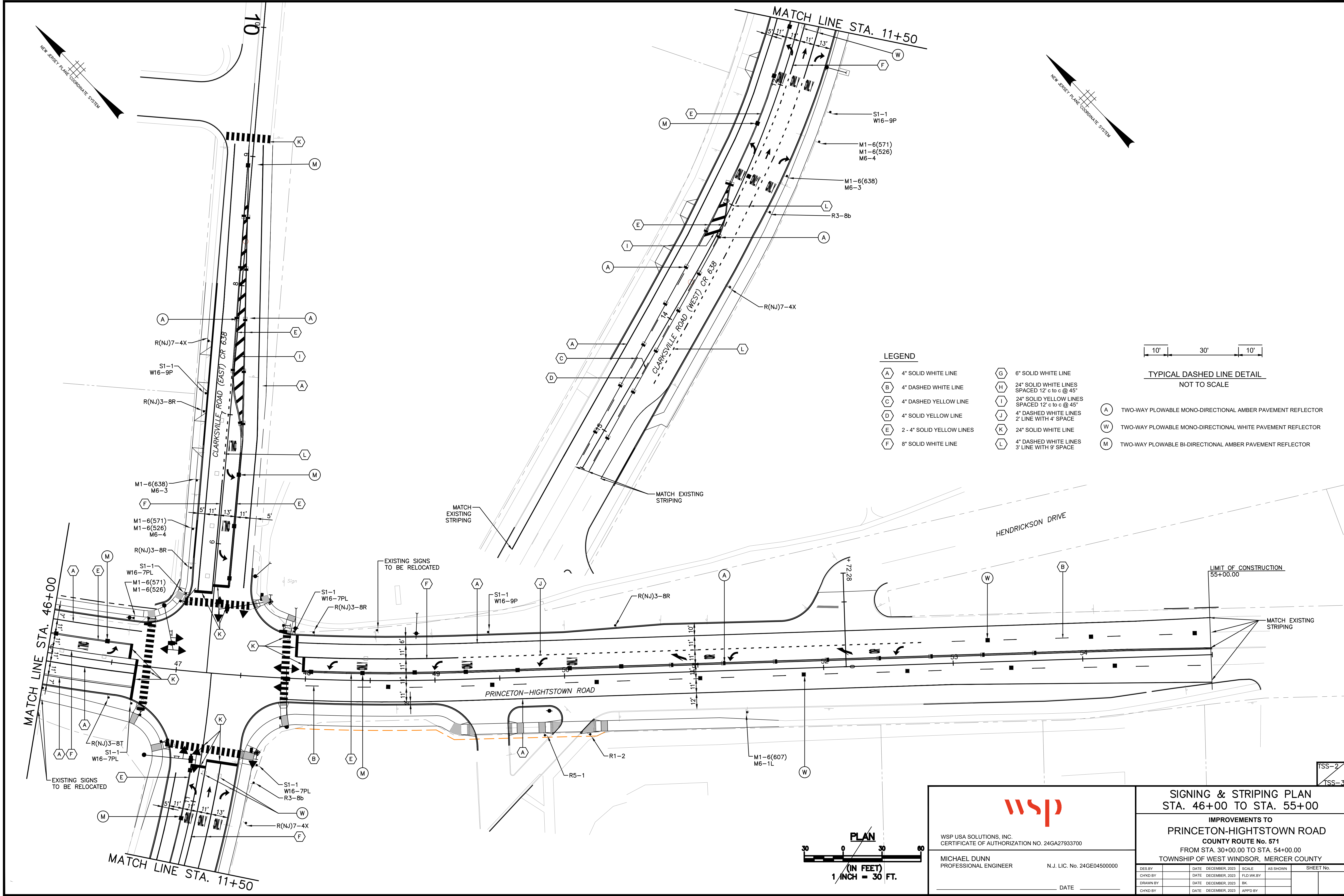
DATE _____

SIGNING & STRIPING PLAN
STA. 28+00 TO STA. 46+00

IMPROVEMENTS TO
PRINCETON-HIGHTSTOWN ROAD
COUNTY ROUTE No. 571
FROM STA. 30+00.00 TO STA. 54+00.00
TOWNSHIP OF WEST WINDSOR, MERCER COUNTY

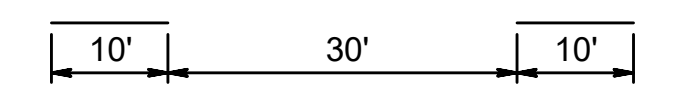
DES BY	DATE	DECEMBER, 2023	SCALE	AS SHOWN	SHEET No.
CHKD BY	DATE	DECEMBER, 2023	FLO/CKBY		
DRAWN BY	DATE	DECEMBER, 2023	BK		
CHKD BY	DATE	DECEMBER, 2023	APPD BY		

pw:\bgh-eus2-pw-bentley.com\gh-eus2-pw-11\Documents\Transportation\Commission\2005\63-Route 571 Final Design\Technical\Cadd-Contract 2\Sheet Files\15_Signing & Striping Plans.dwg, 1/8/2025

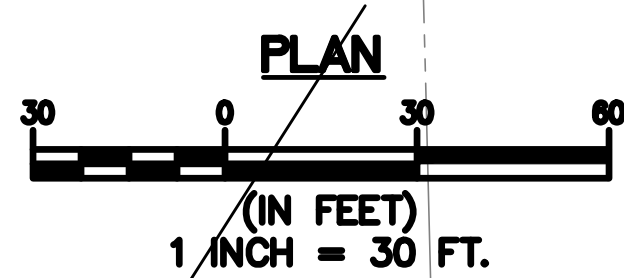


LEGEND

- | | | |
|-------------------------------|--|--|
| (A) 4" SOLID WHITE LINE | (G) 6" SOLID WHITE LINE | (A) TWO-WAY PLOWABLE MONO-DIRECTIONAL AMBER PAVEMENT REFLECTOR |
| (B) 4" DASHED WHITE LINE | (H) 24" SOLID WHITE LINES SPACED 12' c to c @ 45° | (W) TWO-WAY PLOWABLE MONO-DIRECTIONAL WHITE PAVEMENT REFLECTOR |
| (C) 4" DASHED YELLOW LINE | (I) 24" SOLID YELLOW LINES SPACED 12' c to c @ 45° | (M) TWO-WAY PLOWABLE BI-DIRECTIONAL AMBER PAVEMENT REFLECTOR |
| (D) 4" SOLID YELLOW LINE | (J) 4" DASHED WHITE LINES SPACED 2' LINE WITH 4' SPACE | |
| (E) 2 - 4" SOLID YELLOW LINES | (K) 24" SOLID WHITE LINE | |
| (F) 8" SOLID WHITE LINE | (L) 4" DASHED WHITE LINES 3' LINE WITH 9' SPACE | |



TYPICAL DASHED LINE DETAIL
NOT TO SCALE



wsp

WSP USA SOLUTIONS, INC.
CERTIFICATE OF AUTHORIZATION NO. 24GA27933700

MICHAEL DUNN
PROFESSIONAL ENGINEER

N.J. LIC. No. 24GE04500000

DATE _____

SIGNING & STRIPING PLAN			
STA. 46+00 TO STA. 55+00			
IMPROVEMENTS TO			
PRINCETON-HIGHTSTOWN ROAD			
COUNTY ROUTE No. 571			
FROM STA. 30+00.00 TO STA. 54+00.00			
TOWNSHIP OF WEST WINDSOR, MERCER COUNTY			
DES BY	DATE	SCALE	SHEET No.
CHKD BY	DATE	FLO/CHK BY	
DRAWN BY	DATE	BK	
CHKD BY	DATE	APPD BY	