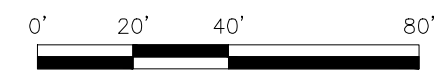
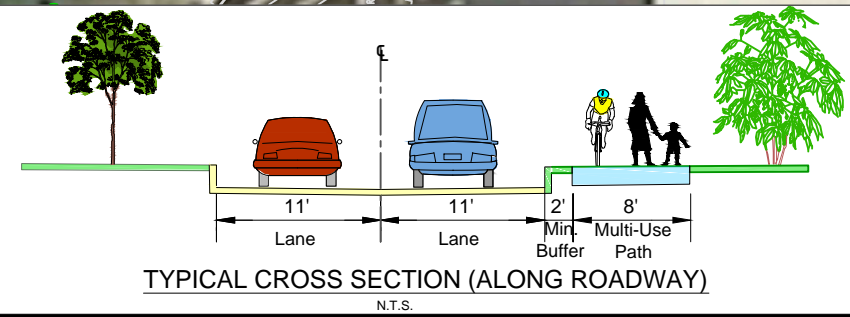


- LEGEND**
- ROADWAY
  - MULTI-USE PATH
  - GRASS/LANDSCAPE
  - RIGHT-OF-WAY (ROW)
  - STEEP SLOPE 20% OR GREATER

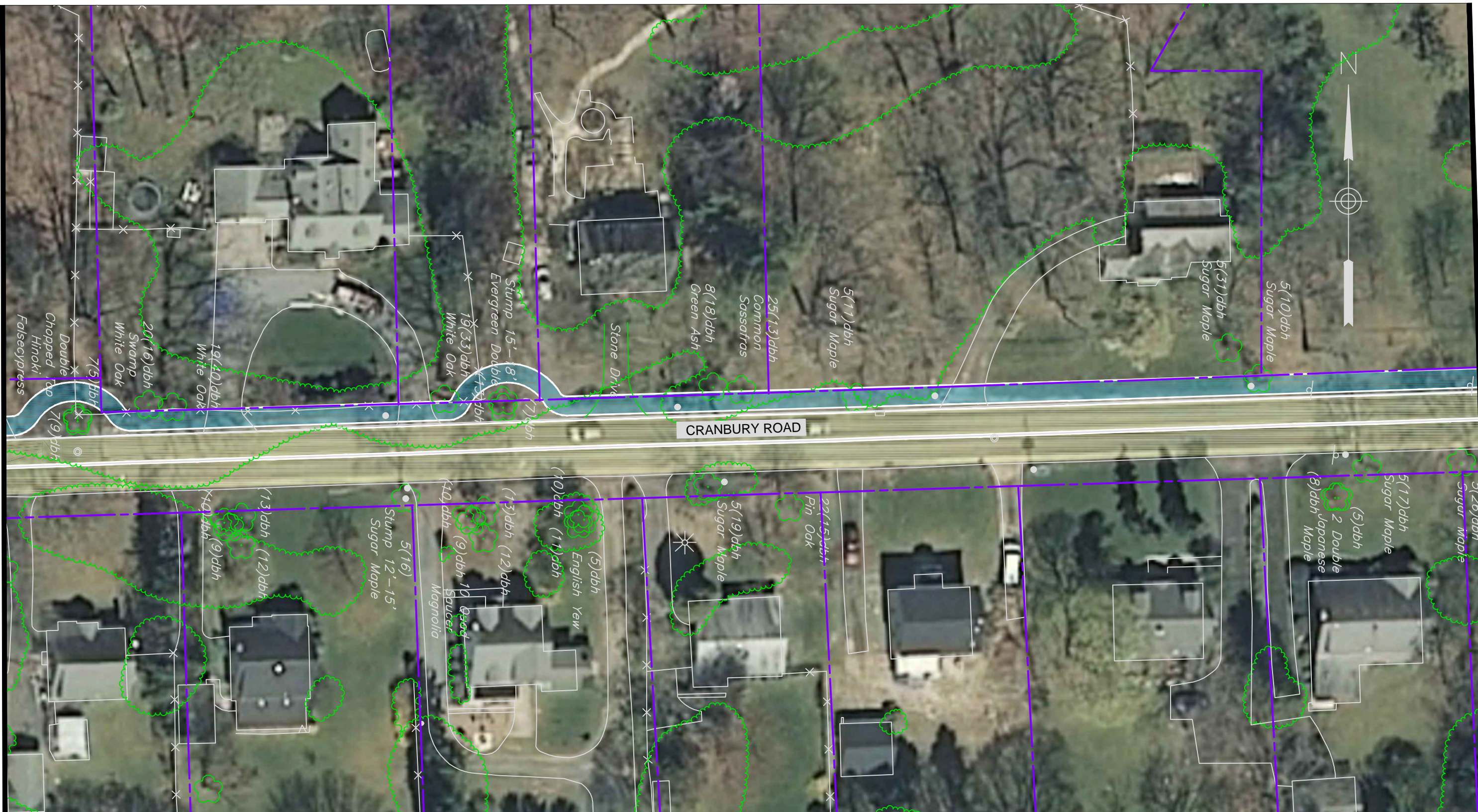
**NOTES:**  
 1) KNOWN STEEP SLOPES ARE APPROXIMATE.  
 2) NOT ALL PATH SLOPES ARE KNOWN.



ALTERNATIVE 5					
<b>CRANBURY ROAD (CR 615) AREA BICYCLE AND PEDESTRIAN MOBILITY ALTERNATIVES</b>					
TOWNSHIP OF WEST WINDSOR, MERCER COUNTY, NJ					
DES. BY	DATE	SCALE	SHEET No.		
CHKD. BY	DATE	FLD. WK. BY			
DRAWN BY	DATE	BK			
CHKD. BY	DATE	APPD. BY			
			1	16	






MATCHLINE A-A

MATCHLINE B-B



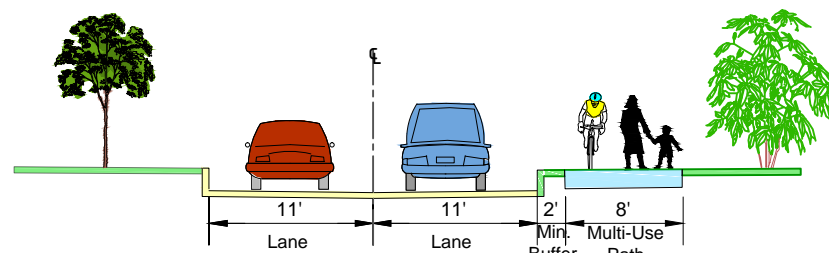
CRANBURY ROAD

**LEGEND**

-  ROADWAY
-  MULTI-USE PATH
-  GRASS/LANDSCAPE
-  RIGHT-OF-WAY (ROW)
-  STEEP SLOPE 20% OR GREATER

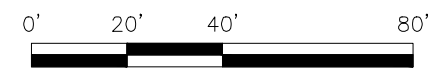
**NOTES:**

- 1) KNOWN STEEP SLOPES ARE APPROXIMATE.
- 2) NOT ALL PATH SLOPES ARE KNOWN.



TYPICAL CROSS SECTION (ALONG ROADWAY)

N.T.S.



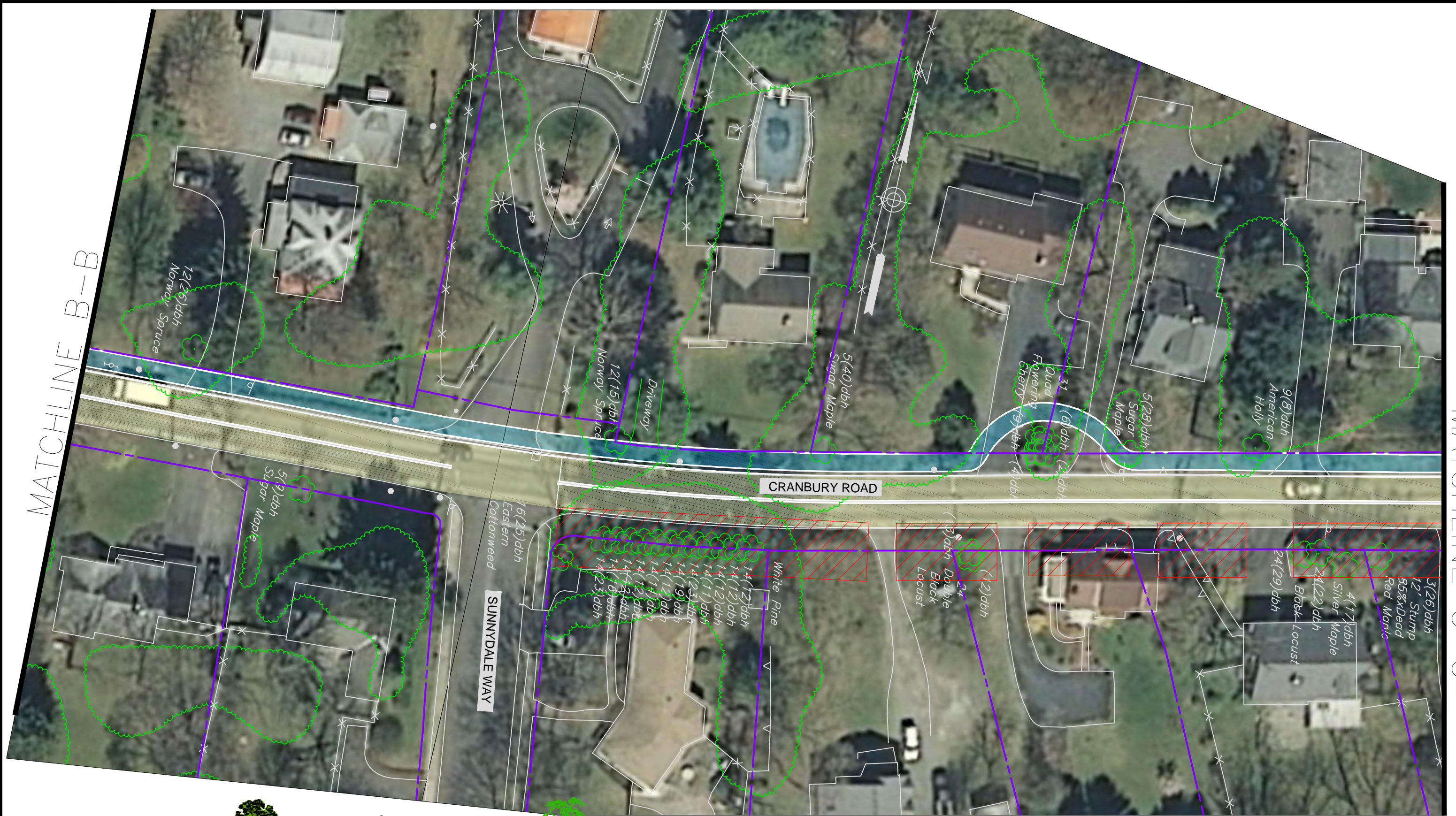
**ALTERNATIVE 5**

CRANBURY ROAD (CR 615) AREA BICYCLE AND PEDESTRIAN MOBILITY ALTERNATIVES  
TOWNSHIP OF WEST WINDSOR, MERCER COUNTY, NJ

DES BY	DATE	SCALE	SHEET No.
CHKD BY	DATE	FLD.WK. BY	
DRAWN BY	DATE	BK	2
CHKD BY	DATE	APPD BY	16

MATCHLINE B-B

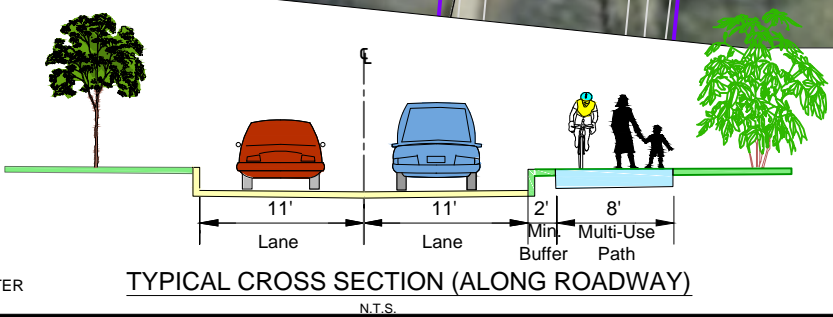
MATCHLINE C-C



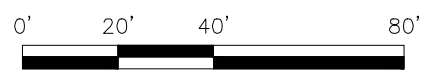
CRANBURY ROAD

SUNNYDALE WAY

- LEGEND**
- ROADWAY
  - MULTI-USE PATH
  - GRASS/LANDSCAPE
  - RIGHT-OF-WAY (ROW)
  - STEEP SLOPE 20% OR GREATER



**NOTES:**  
 1) KNOWN STEEP SLOPES ARE APPROXIMATE.  
 2) NOT ALL PATH SLOPES ARE KNOWN.

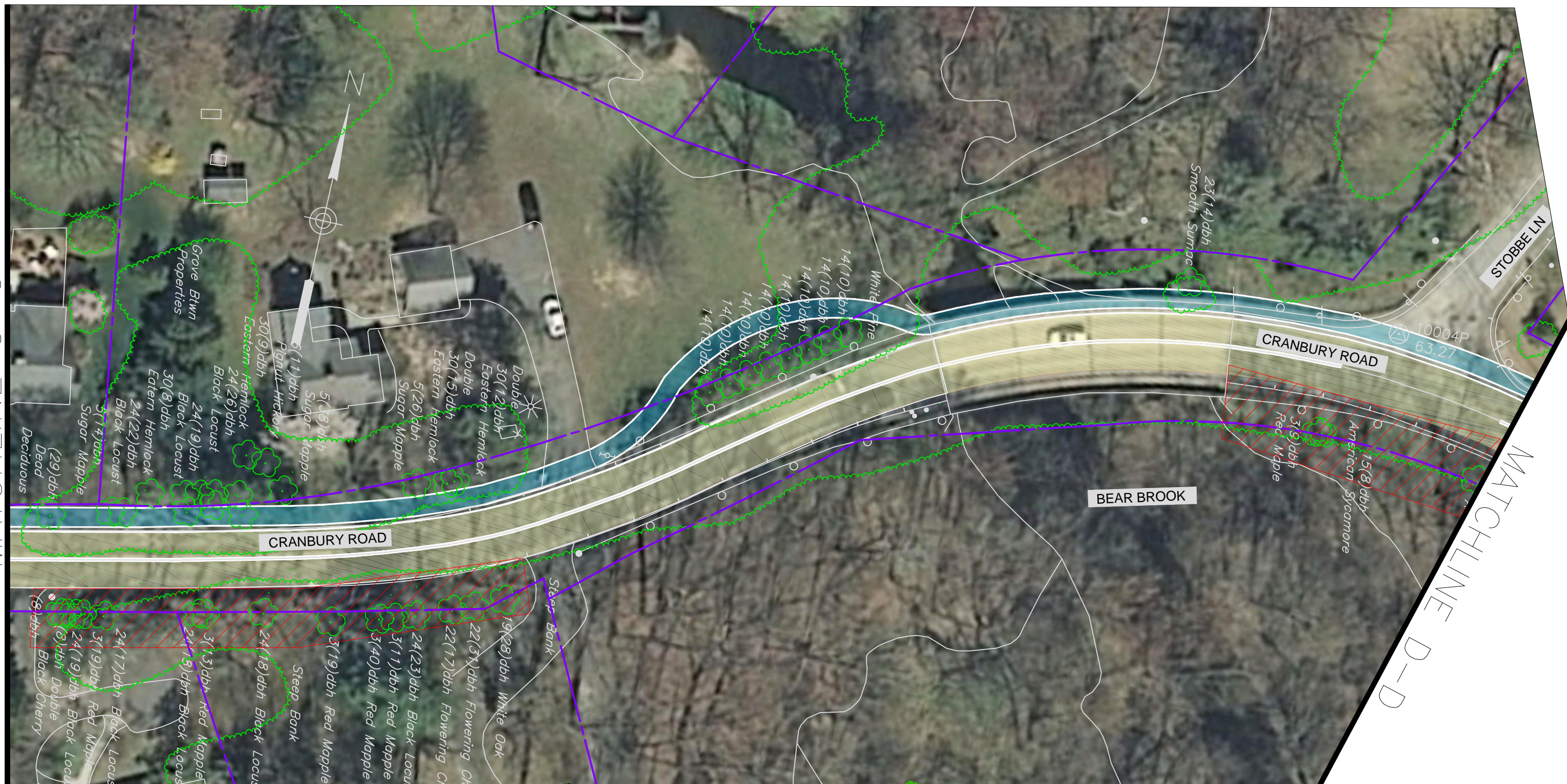


**ALTERNATIVE 5**

CRANBURY ROAD (CR 615) AREA BICYCLE AND PEDESTRIAN MOBILITY ALTERNATIVES  
 TOWNSHIP OF WEST WINDSOR, MERCER COUNTY, NJ






DES BY	DATE	SCALE	SHEET No.
CHKD BY	DATE	FLD.WK. BY	3
DRAWN BY	DATE	BK	16
CHKD BY	DATE	APPD BY	

MATCHLINE C-C



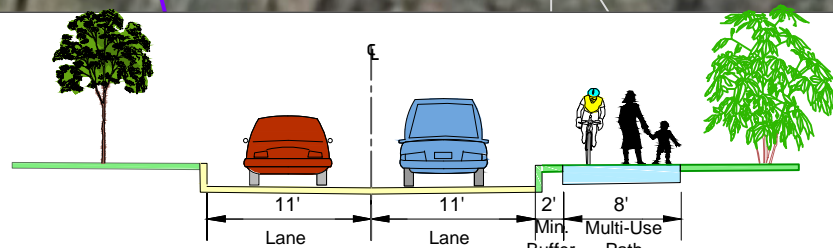
MATCHLINE D-D

**LEGEND**

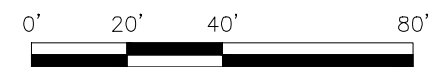
-  ROADWAY
-  MULTI-USE PATH
-  GRASS/LANDSCAPE
-  RIGHT-OF-WAY (ROW)
-  STEEP SLOPE 20% OR GREATER

**NOTES:**

- 1) KNOWN STEEP SLOPES ARE APPROXIMATE.
- 2) NOT ALL PATH SLOPES ARE KNOWN.



TYPICAL CROSS SECTION (ALONG ROADWAY)  
N.T.S.



**ALTERNATIVE 5**

**CRANBURY ROAD (CR 615) AREA BICYCLE AND PEDESTRIAN MOBILITY ALTERNATIVES**  
TOWNSHIP OF WEST WINDSOR, MERCER COUNTY, NJ

DES BY	DATE	SCALE	SHEET No.
CHKD BY	DATE	FLD.WK. BY	
DRAWN BY	DATE	BK	4
CHKD BY	DATE	APPD BY	16








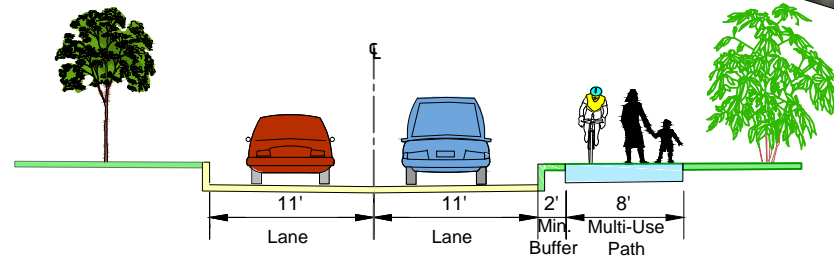
MATCHLINE E-E

MATCHLINE F-F



**LEGEND**

-  ROADWAY
-  MULTI-USE PATH
-  GRASS/LANDSCAPE
-  RIGHT-OF-WAY (ROW)
-  STEEP SLOPE 20% OR GREATER

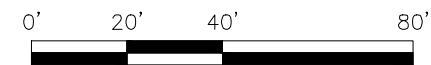


TYPICAL CROSS SECTION (ALONG ROADWAY)

N.T.S.

**NOTES:**

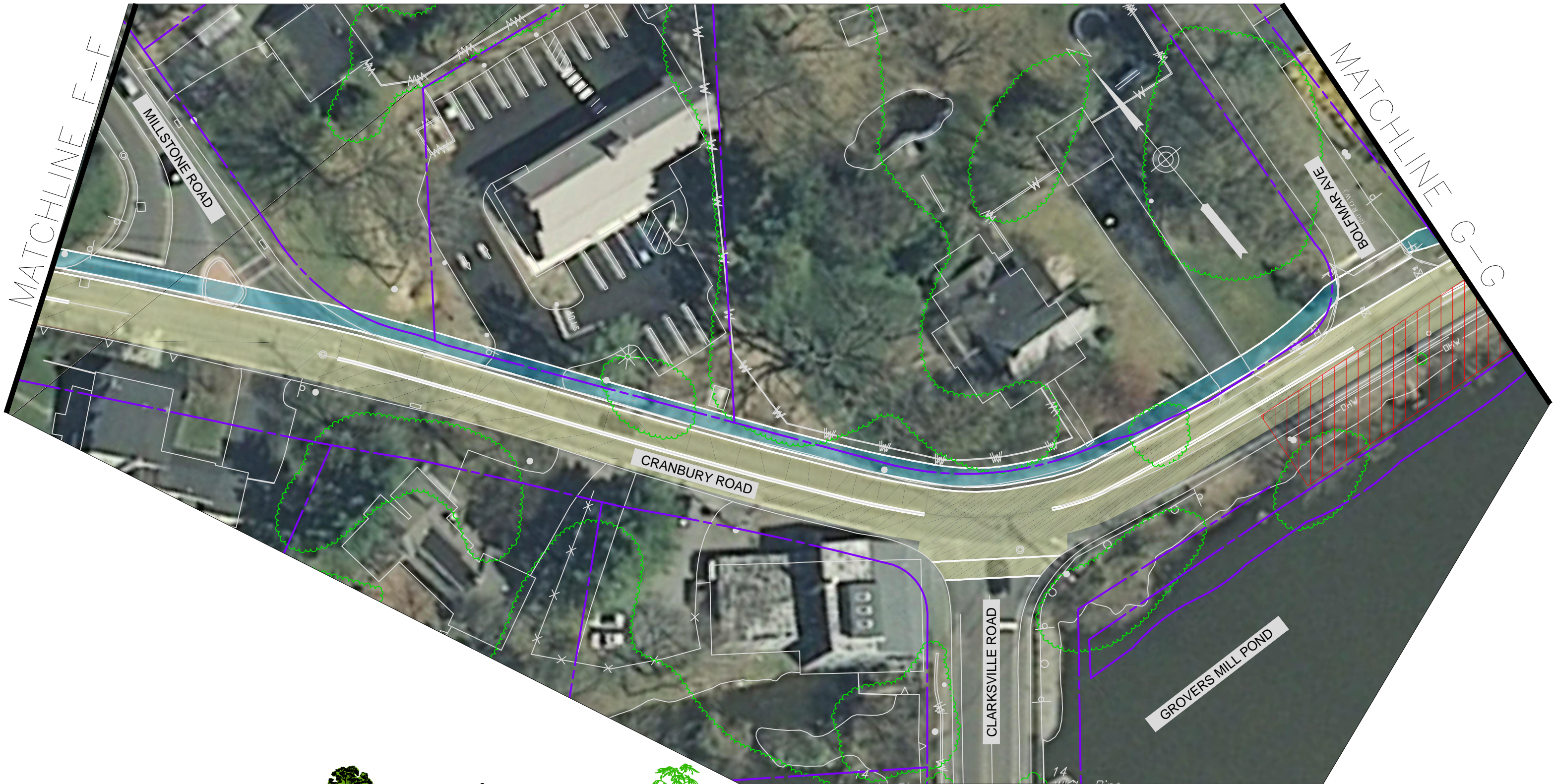
- 1) KNOWN STEEP SLOPES ARE APPROXIMATE.
- 2) NOT ALL PATH SLOPES ARE KNOWN.



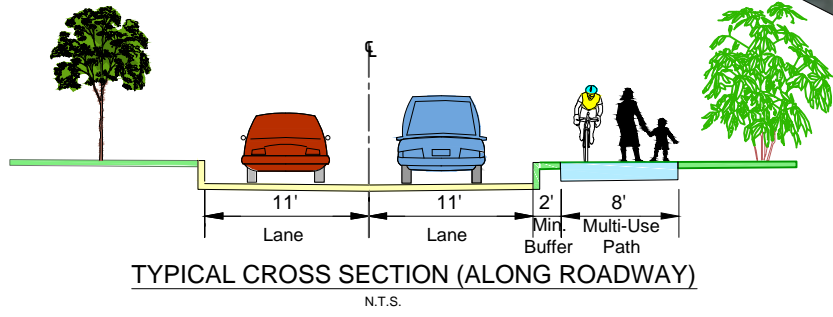
**ALTERNATIVE 5**

CRANBURY ROAD (CR 615) AREA BICYCLE AND PEDESTRIAN MOBILITY ALTERNATIVES  
TOWNSHIP OF WEST WINDSOR, MERCER COUNTY, NJ

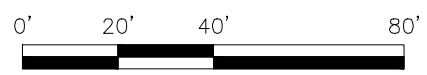
DES BY	DATE	SCALE	SHEET No.	
CHKD BY	DATE	FLD.WK. BY	6	16
DRAWN BY	DATE	BK		
CHKD BY	DATE	APPD BY		



- LEGEND**
- ROADWAY
  - MULTI-USE PATH
  - GRASS/LANDSCAPE
  - RIGHT-OF-WAY (ROW)
  - STEEP SLOPE 20% OR GREATER



**NOTES:**  
 1) KNOWN STEEP SLOPES ARE APPROXIMATE.  
 2) NOT ALL PATH SLOPES ARE KNOWN.



ALTERNATIVE 5					
<b>CRANBURY ROAD (CR 615) AREA BICYCLE AND PEDESTRIAN MOBILITY ALTERNATIVES</b>					
TOWNSHIP OF WEST WINDSOR, MERCER COUNTY, NJ					
DES BY	DATE	SCALE	SHEET No.		
CHKD BY	DATE	FLD.WK. BY			
DRAWN BY	DATE	BK			7
CHKD BY	DATE	APPD BY			16



MATCHLINE G-G

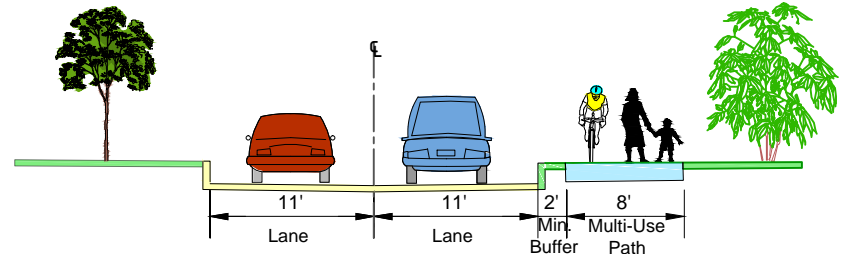
MATCHLINE H-H

**LEGEND**

- ROADWAY
- MULTI-USE PATH
- GRASS/LANDSCAPE
- RIGHT-OF-WAY (ROW)
- STEEP SLOPE 20% OR GREATER

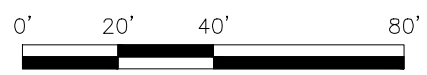
**NOTES:**

- 1) KNOWN STEEP SLOPES ARE APPROXIMATE.
- 2) NOT ALL PATH SLOPES ARE KNOWN.



TYPICAL CROSS SECTION (ALONG ROADWAY)

N.T.S.



**ALTERNATIVE 5**

CRANBURY ROAD (CR 615) AREA BICYCLE AND PEDESTRIAN MOBILITY ALTERNATIVES  
TOWNSHIP OF WEST WINDSOR, MERCER COUNTY, NJ

DES BY	DATE	SCALE	SHEET No.	
CHKD BY	DATE	FLD.WK. BY	8	16
DRAWN BY	DATE	BK		
CHKD BY	DATE	APPD BY		



MATCHLINE H-H

MATCHLINE I-I

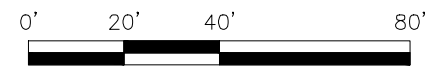
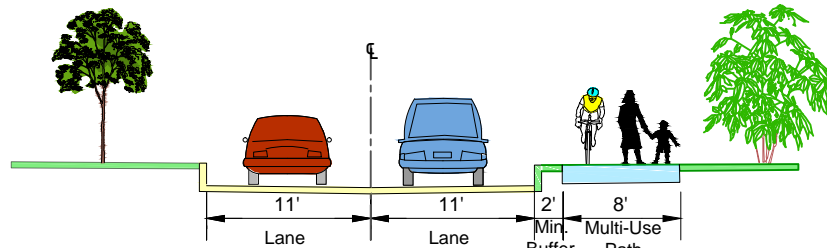


**LEGEND**

- ROADWAY
- MULTI-USE PATH
- GRASS/LANDSCAPE
- RIGHT-OF-WAY (ROW)
- STEEP SLOPE 20% OR GREATER

**NOTES:**

- 1) KNOWN STEEP SLOPES ARE APPROXIMATE.
- 2) NOT ALL PATH SLOPES ARE KNOWN.



**ALTERNATIVE 5**

**CRANBURY ROAD (CR 615) AREA BICYCLE AND PEDESTRIAN MOBILITY ALTERNATIVES**  
TOWNSHIP OF WEST WINDSOR, MERCER COUNTY, NJ

DES BY	DATE	SCALE	SHEET No.	
CHKD BY	DATE	FLD.WK. BY	9	16
DRAWN BY	DATE	BK		
CHKD BY	DATE	APPD BY		

MATCHLINE I-I

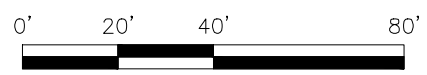
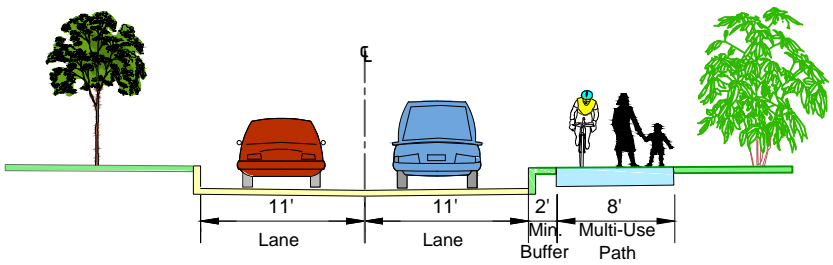
MATCHLINE J-J



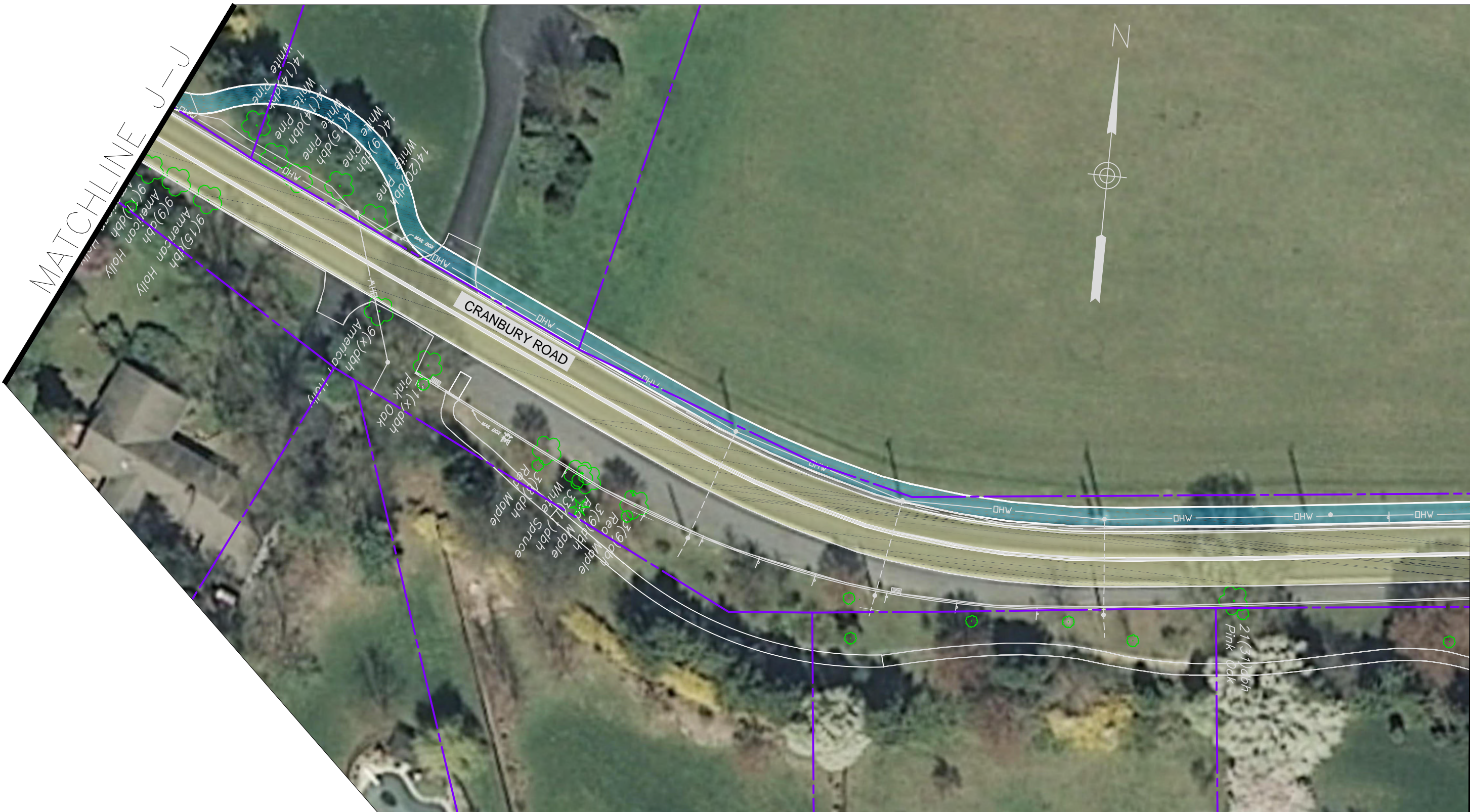
**LEGEND**






- ROADWAY
- MULTI-USE PATH
- GRASS/LANDSCAPE
- RIGHT-OF-WAY (ROW)
- STEEP SLOPE 20% OR GREATER

**NOTES:**  
 1) KNOWN STEEP SLOPES ARE APPROXIMATE.  
 2) NOT ALL PATH SLOPES ARE KNOWN.

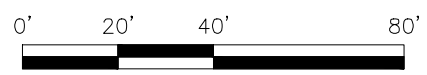
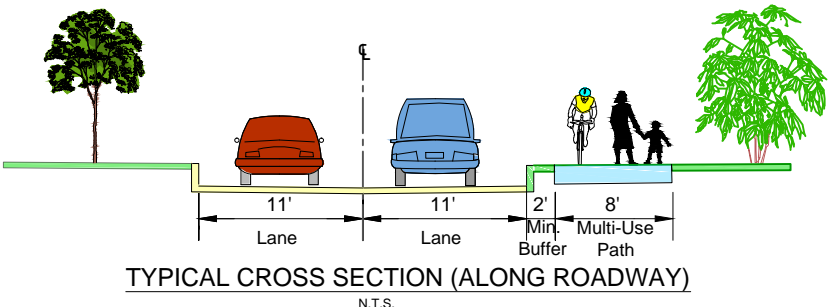


ALTERNATIVE 5					
CRANBURY ROAD (CR 615) AREA BICYCLE AND PEDESTRIAN MOBILITY ALTERNATIVES					
TOWNSHIP OF WEST WINDSOR, MERCER COUNTY, NJ					
DES BY	DATE	SCALE	SHEET No.		
CHKD BY	DATE	FLD.WK. BY			
DRAWN BY	DATE	BK	10		
CHKD BY	DATE	APPD BY			



- LEGEND**
-  ROADWAY
  -  MULTI-USE PATH
  -  GRASS/LANDSCAPE
  -  RIGHT-OF-WAY (ROW)
  -  STEEP SLOPE 20% OR GREATER

**NOTES:**  
 1) KNOWN STEEP SLOPES ARE APPROXIMATE.  
 2) NOT ALL PATH SLOPES ARE KNOWN.








ALTERNATIVE 5			
CRANBURY ROAD (CR 615) AREA BICYCLE AND PEDESTRIAN MOBILITY ALTERNATIVES			
TOWNSHIP OF WEST WINDSOR, MERCER COUNTY, NJ			
DES BY	DATE	SCALE	SHEET No.
CHKD BY	DATE	FLD.WK. BY	
DRAWN BY	DATE	BK	11
CHKD BY	DATE	APPD BY	16

MATCHLINE K-K

MATCHLINE L-L

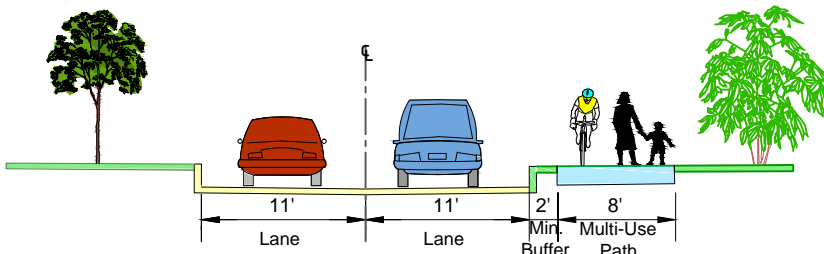


**LEGEND**

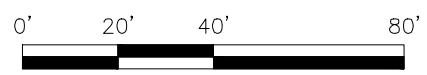
-  ROADWAY
-  MULTI-USE PATH
-  GRASS/LANDSCAPE
-  RIGHT-OF-WAY (ROW)
-  STEEP SLOPE 20% OR GREATER

**NOTES:**

- 1) KNOWN STEEP SLOPES ARE APPROXIMATE.
- 2) NOT ALL PATH SLOPES ARE KNOWN.



TYPICAL CROSS SECTION (ALONG ROADWAY)  
N.T.S.



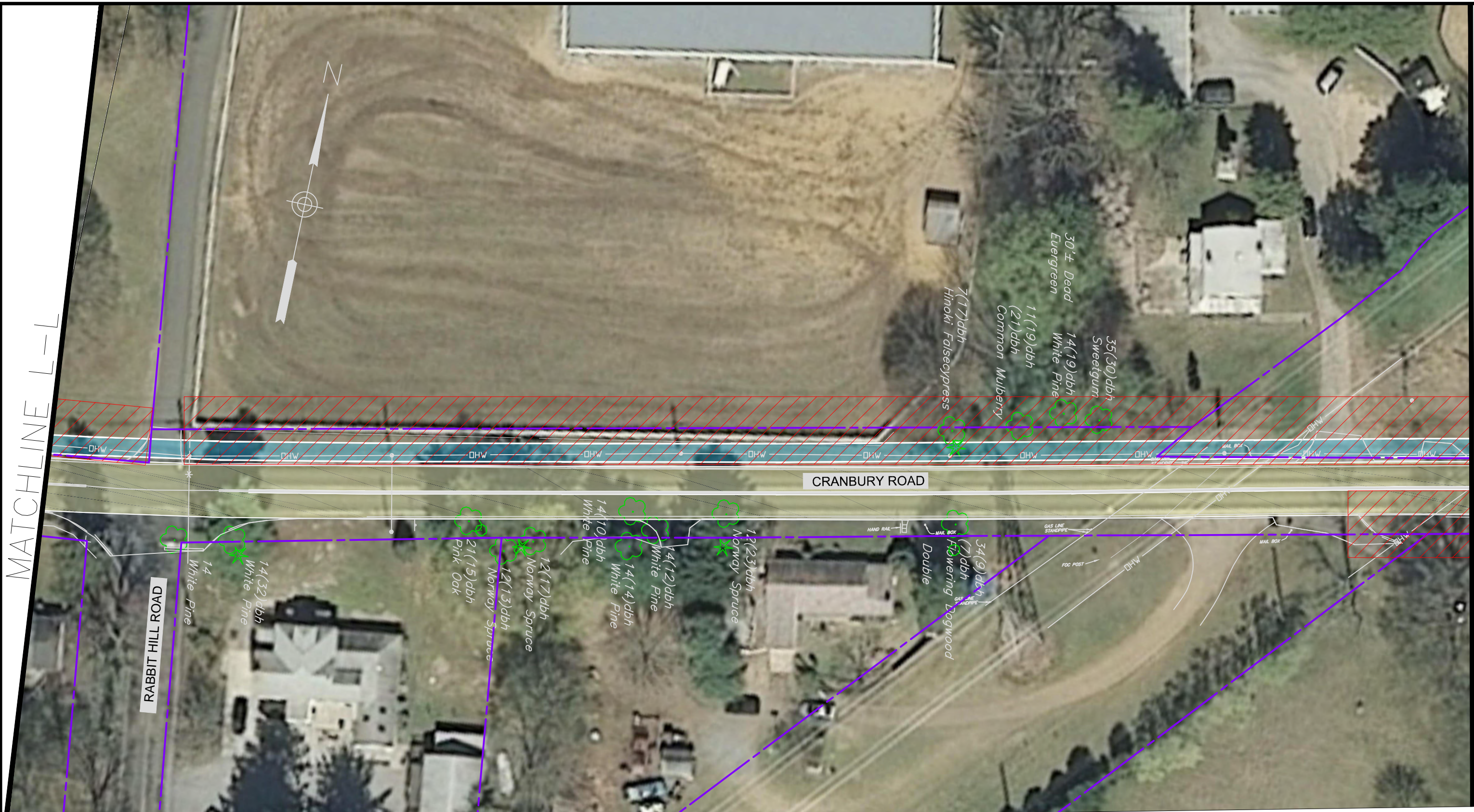
**ALTERNATIVE 5**

CRANBURY ROAD (CR 615) AREA BICYCLE AND PEDESTRIAN MOBILITY ALTERNATIVES  
TOWNSHIP OF WEST WINDSOR, MERCER COUNTY, NJ






DES BY	DATE	SCALE	SHEET No.	
CHKD BY	DATE	FLD.WK. BY	12	16
DRAWN BY	DATE	BK		
CHKD BY	DATE	APPD BY		

MATCHLINE L-L

MATCHLINE M-M

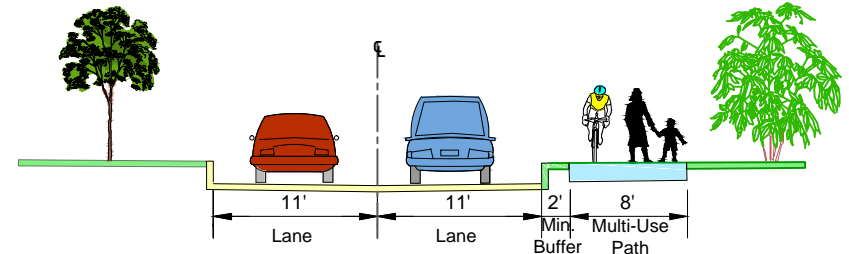


**LEGEND**

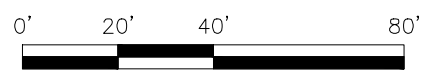
-  ROADWAY
-  MULTI-USE PATH
-  GRASS/LANDSCAPE
-  RIGHT-OF-WAY (ROW)
-  STEEP SLOPE 20% OR GREATER

**NOTES:**

- 1) KNOWN STEEP SLOPES ARE APPROXIMATE.
- 2) NOT ALL PATH SLOPES ARE KNOWN.



TYPICAL CROSS SECTION (ALONG ROADWAY)  
N.T.S.



ALTERNATIVE 5					
CRANBURY ROAD (CR 615) AREA BICYCLE AND PEDESTRIAN MOBILITY ALTERNATIVES					
TOWNSHIP OF WEST WINDSOR, MERCER COUNTY, NJ					
DES BY	DATE	SCALE	SHEET No.		
CHKD BY	DATE	FLD.WK. BY	13	16	
DRAWN BY	DATE	BK			
CHKD BY	DATE	APPD BY			








MATCHLINE N-N

MATCHLINE 0-0

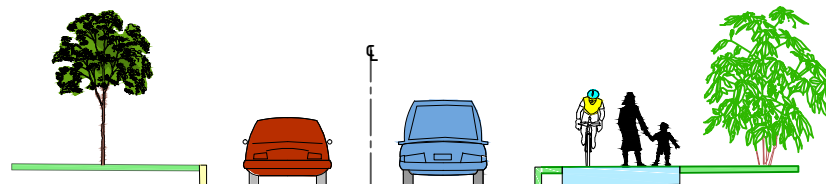


**LEGEND**

-  ROADWAY
-  MULTI-USE PATH
-  GRASS/LANDSCAPE
-  RIGHT-OF-WAY (ROW)
-  STEEP SLOPE 20% OR GREATER

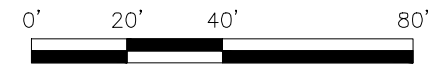
**NOTES:**

- 1) KNOWN STEEP SLOPES ARE APPROXIMATE.
- 2) NOT ALL PATH SLOPES ARE KNOWN.



TYPICAL CROSS SECTION (ALONG ROADWAY)

N.T.S.

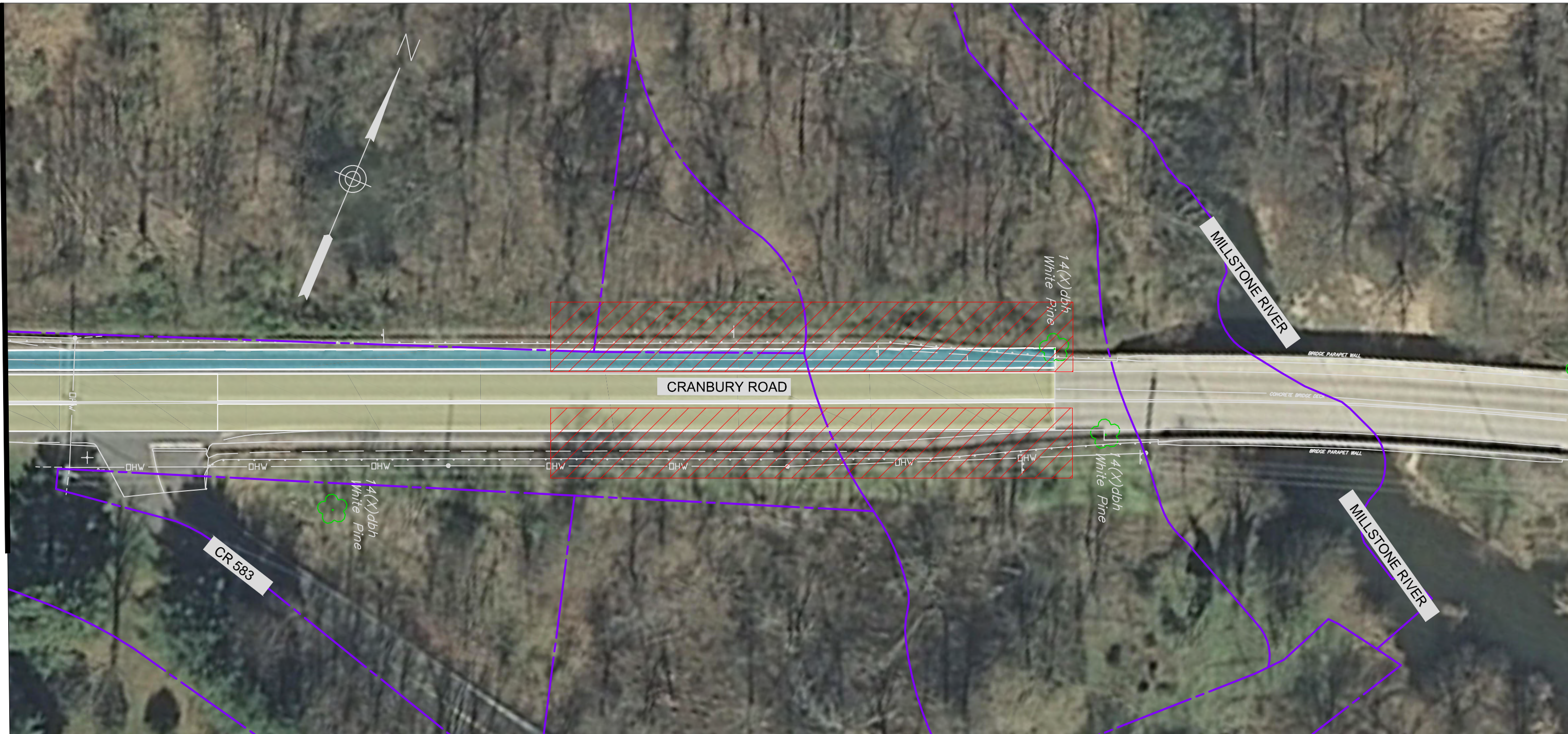


**ALTERNATIVE 5**






CRANBURY ROAD (CR 615) AREA BICYCLE AND PEDESTRIAN MOBILITY ALTERNATIVES  
TOWNSHIP OF WEST WINDSOR, MERCER COUNTY, NJ

DES BY	DATE	SCALE	SHEET No.	
CHKD BY	DATE	FLD.WK. BY	15	16
DRAWN BY	DATE	BK		
CHKD BY	DATE	APPD BY		

MATCHLINE 0-0

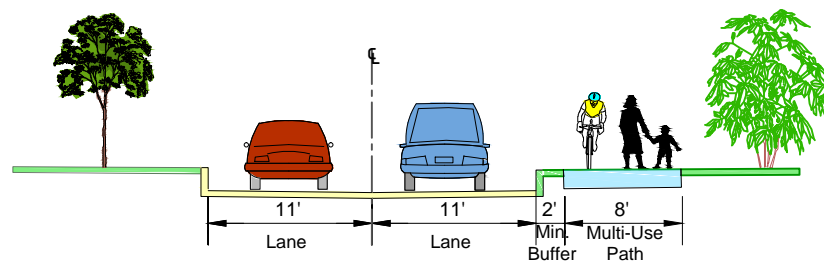


**LEGEND**

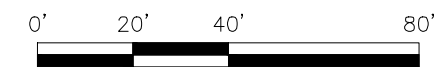
-  ROADWAY
-  MULTI-USE PATH
-  GRASS/LANDSCAPE
-  RIGHT-OF-WAY (ROW)
-  STEEP SLOPE 20% OR GREATER

**NOTES:**

- 1) KNOWN STEEP SLOPES ARE APPROXIMATE.
- 2) NOT ALL PATH SLOPES ARE KNOWN.



TYPICAL CROSS SECTION (ALONG ROADWAY)  
N.T.S.



**ALTERNATIVE 5**

CRANBURY ROAD (CR 615) AREA BICYCLE AND PEDESTRIAN MOBILITY ALTERNATIVES  
TOWNSHIP OF WEST WINDSOR, MERCER COUNTY, NJ

DES BY	DATE	SCALE	SHEET No.	
CHKD BY	DATE	FLD.WK. BY	16	16
DRAWN BY	DATE	BK		
CHKD BY	DATE	APPD BY		